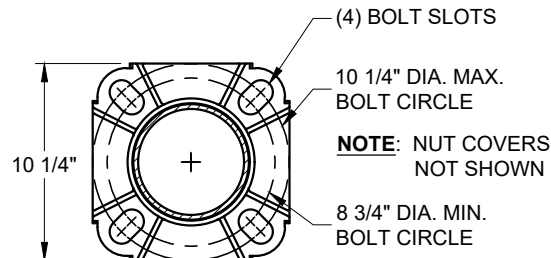
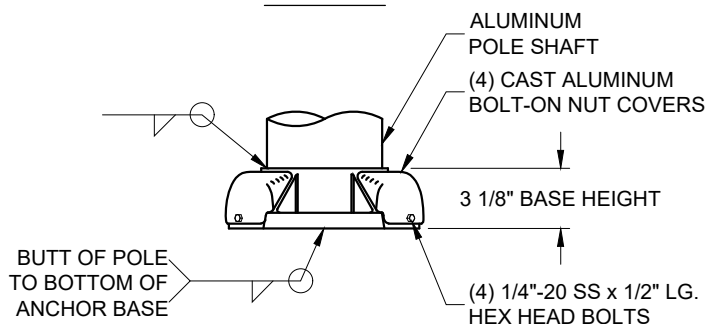


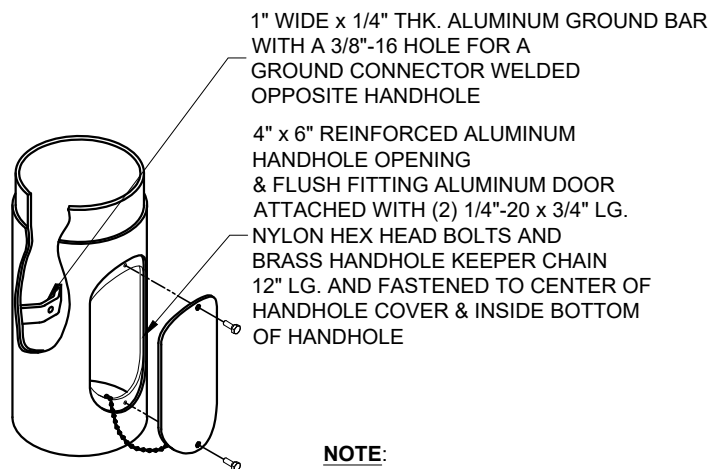
**J-HOOK MOUNTING DETAIL**



**DETAIL B**



**DETAIL A**



**HANDHOLE DETAIL**

**NOTE:**  
3" x 3 15/16" MIN. DEBURRED CLEAR OPENING

**NOTE:** LIGHT POLE ATTACHMENT SCHEDULE CHART ON "PAGE 4"

DO NOT SCALE

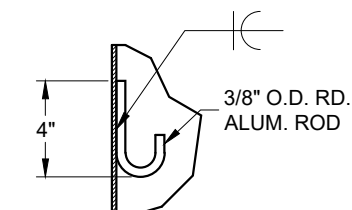
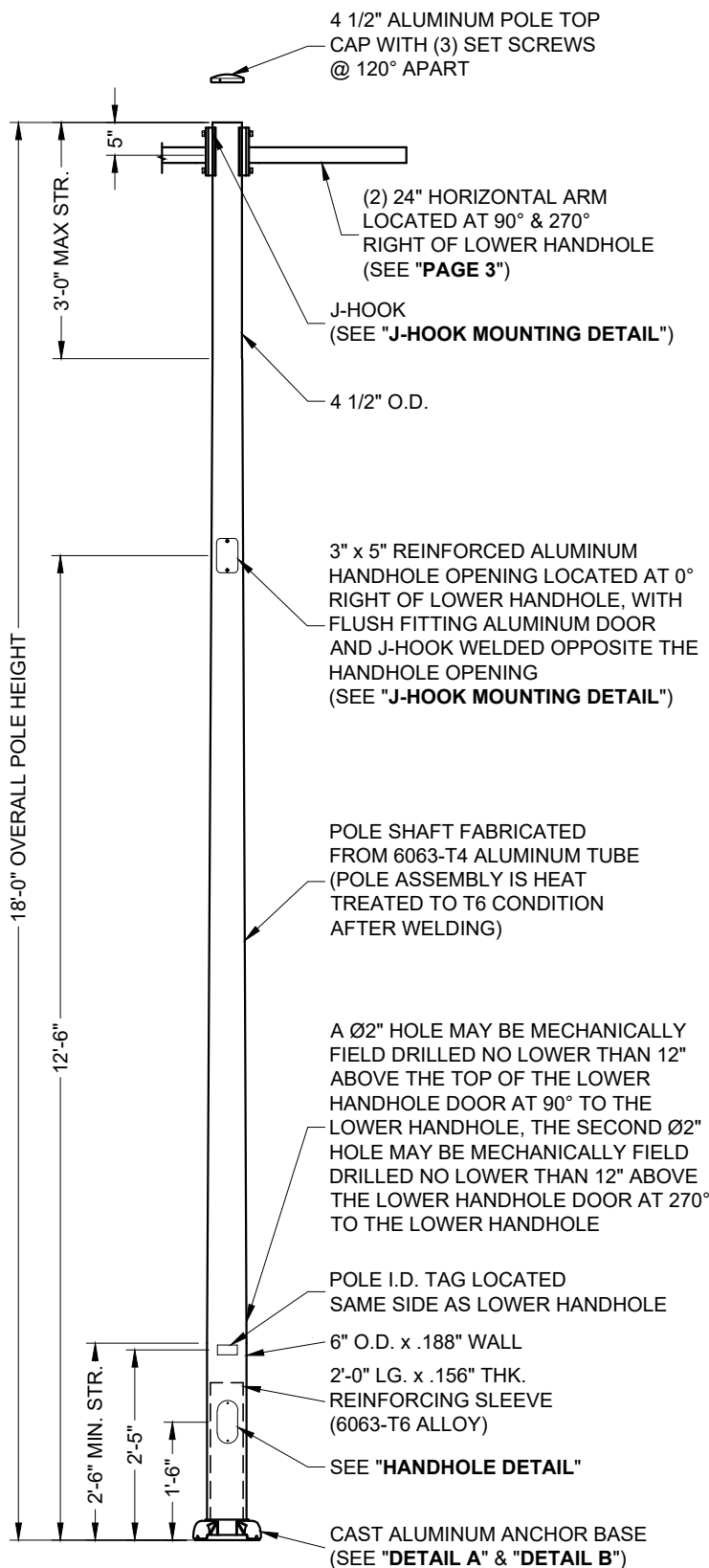
**valmont**

Valmont Industries, Inc. Structures Division  
20805 Eaton Ave Farmington, Minnesota 55024-7932  
Phone: (651) 463-8990 (800) 899-7577  
Fax: (651) 463-3349

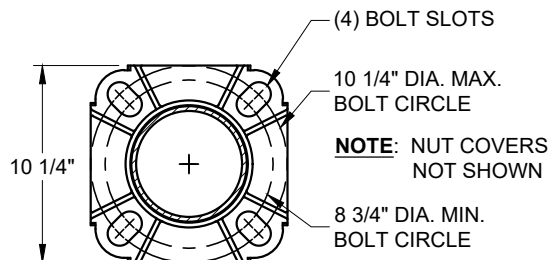
**\*\*CONFIDENTIAL\*\***

The information contained in this drawing is privileged and confidential, and may be protected from disclosure. Please be aware that any use or dissemination of this drawing may be subject to legal restriction or sanction.

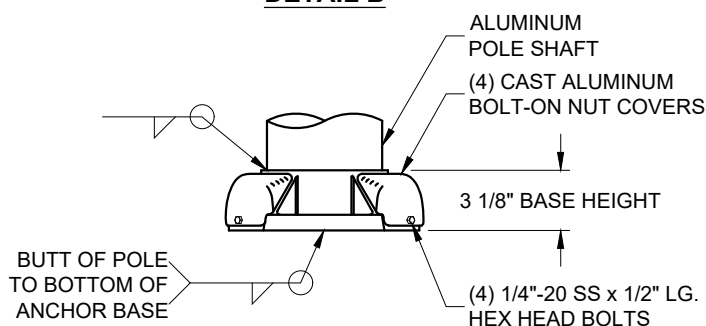
TITLE:		QTY:	
S ANCHOR BASE POLE		1	
MODEL NO.:		DWN BY:	
MATERIAL: ALUMINUM ALLOY		KPS	
FINISH: 100 GRIT SATIN POLISH		CHK'D BY:	
PROJECT: OVERLAND PARK, KS		APPR BY:	
SOLD TO:		JRB	
SHIP TO:		DATE:	
P.O. NO:		05-30-25	
REP: PREMIER LIGHTING - KS/MO		DWG NO:	
		A56721	
		PAGE:	
		1 / 4	
REV	DATE	REVISION DESCRIPTION	BY



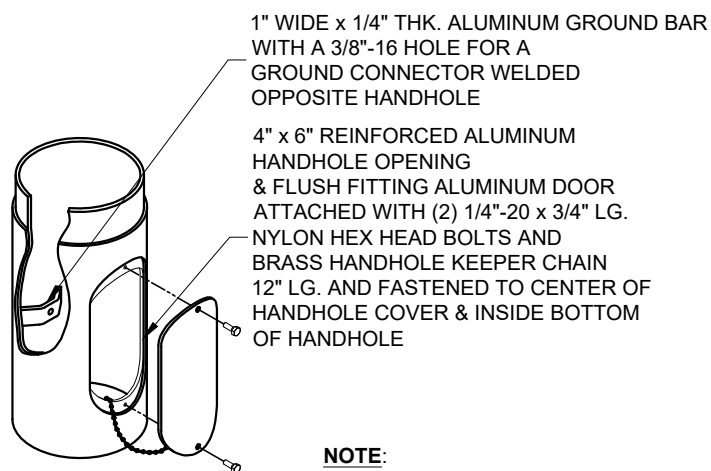
**J-HOOK MOUNTING DETAIL**



**DETAIL B**



**DETAIL A**



**HANDHOLE DETAIL**

**NOTE:**  
3" x 3 15/16" MIN. DEBURRED CLEAR OPENING

**NOTE:** LIGHT POLE ATTACHMENT SCHEDULE CHART ON "PAGE 4"

DO NOT SCALE

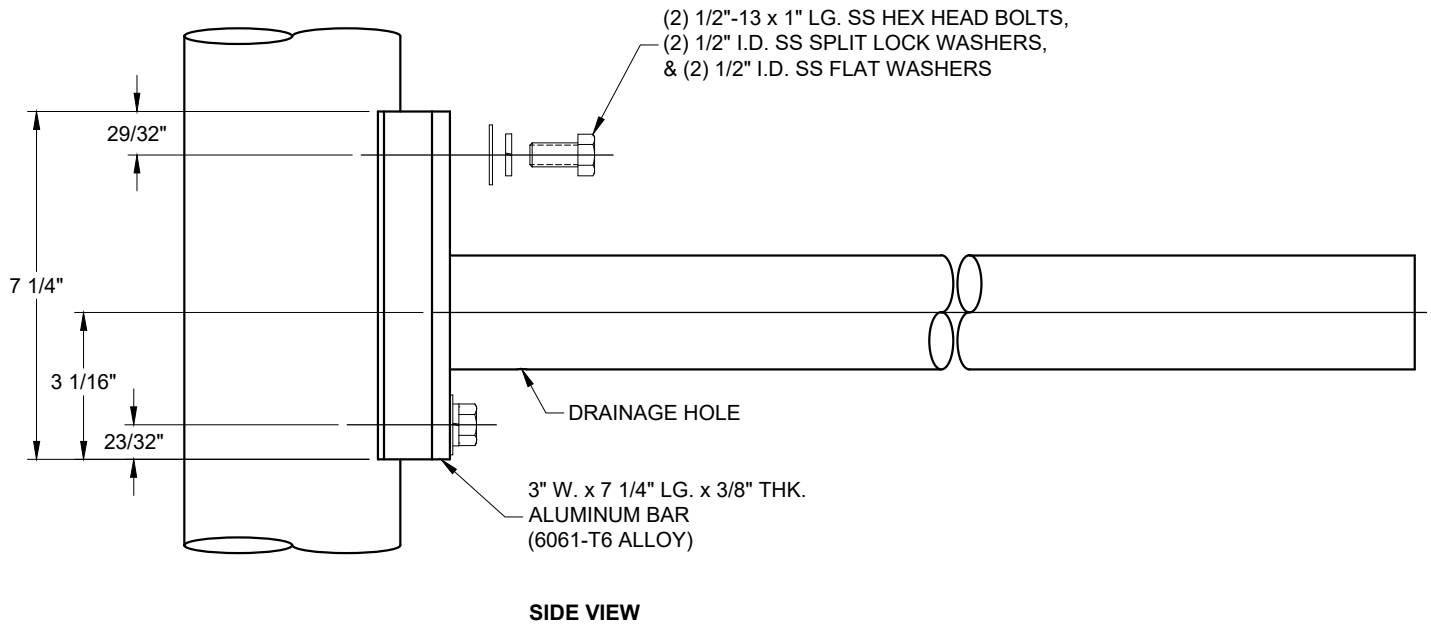
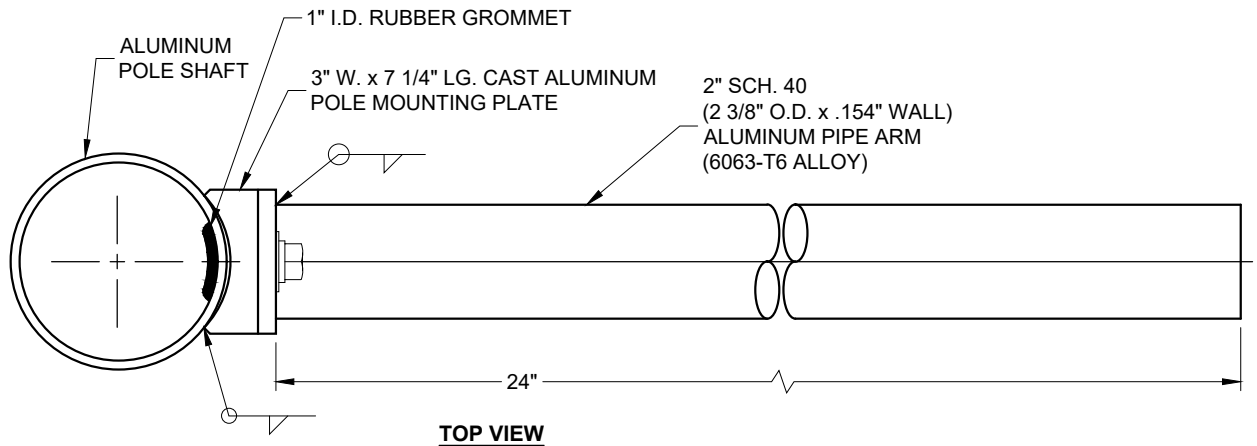
**valmont**

Valmont Industries, Inc. Structures Division  
20805 Eaton Ave Farmington, Minnesota 55024-7932  
Phone: (651) 463-8990 (800) 899-7577  
Fax: (651) 463-3349

**\*\*CONFIDENTIAL\*\***

The information contained in this drawing is privileged and confidential, and may be protected from disclosure. Please be aware that any use or dissemination of this drawing may be subject to legal restriction or sanction.

TITLE:		QTY:	
S ANCHOR BASE POLE		1	
MODEL NO.:		DWN BY:	
MATERIAL: ALUMINUM ALLOY		KPS	
FINISH: 100 GRIT SATIN POLISH		CHK'D BY:	
PROJECT: OVERLAND PARK, KS		APPR BY:	
SOLD TO:		JRB	
SHIP TO:		DATE:	
P.O. NO:		05-30-25	
REP: PREMIER LIGHTING - KS/MO		DWG NO:	
		A56721	
		PAGE:	
		2 / 4	
REV	DATE	REVISION DESCRIPTION	BY



DO NOT SCALE

**valmont** 

Valmont Industries, Inc. Structures Division  
20805 Eaton Ave Farmington, Minnesota 55024-7932  
Phone: (651) 463-8990 (800) 899-7577  
Fax: (651) 463-3349

**\*\*CONFIDENTIAL\*\***

The information contained in this drawing is privileged and confidential, and may be protected from disclosure. Please be aware that any use or dissemination of this drawing may be subject to legal restriction or sanction.

TITLE:		QTY:	
S		3	
MODEL NO.:		DWN BY:	
1HS23824		KPS	
MATERIAL:		CHK'D BY:	
ALUMINUM ALLOY		APPR BY:	
FINISH:		JRB	
PROJECT:		DATE:	
OVERLAND PARK, KS		05-30-25	
SOLD TO:		DWG NO:	
SHIP TO:		A56721	
P.O. NO:		PAGE:	
REP:		3 / 4	
PREMIER LIGHTING - KS/MO			
△			
△			
△			
REV	DATE	REVISION DESCRIPTION	BY

LIGHT POLE ATTACHMENT SCHEDULE				
MOUNTING HEIGHT ABOVE GRADE (FT)	MOUNTING HEIGHT ON POLE (FT)	EQUIPMENT	WEIGHT LBS)	SIZE
20	18	LED ON 2' ARM	21	0.78 SQ. FT. EPA
20	18	LED ON 2' ARM	21	0.78 SQ. FT. EPA
19	17	WIFI ACCESS POINT	2.1	0.57 SQ. FT. EPA
19	17	CAMERA	11.04	9" DIA. x 16" TALL
19	17	WALL MOUNT ARM 2' EXTENSION	1	1.0 SQ. FT. EPA MAX.
19	17	WALL TO POLE BRACKET	0.25	1.0 SQ. FT. EPA MAX.
6	4	WEATHERPROOF ENCLOSURE	7.4	13.32" x 11.32" x 5.60"
6	4	CCTV MEDIA CONVERTER	0.5	INSIDE ENCLOSURE
4.75	2.75	2" NPT CONDUIT FITTING W/ PLUG	-	-

POLE RATING (PER AASHTO 2013):  
3-SEC GUST WIND SPEED: 90 MPH MAX  
SEE "LIGHT POLE ATTACHMENT SCHEDULE" FOR POLE LOADING.

DO NOT SCALE



Valmont Industries, Inc. Structures Division  
20805 Eaton Ave Farmington, Minnesota 55024-7932  
Phone: (651) 463-8990 (800) 899-7577  
Fax: (651) 463-3349

**\*\*CONFIDENTIAL\*\***

The information contained in this drawing is privileged and confidential, and may be protected from disclosure. Please be aware that any use or dissemination of this drawing may be subject to legal restriction or sanction.

TITLE: S LIGHT POLE ATTACHMENT SCHEDULE		QTY:
MODEL NO.:		DWN BY: KPS
MATERIAL:		CHK'D BY:
FINISH:		APPR BY: JRB
PROJECT: OVERLAND PARK, KS		DATE: 05-30-25
SOLD TO:		DWG NO: A56721
SHIP TO:		PAGE:
P.O. NO:		4 / 4
REP: PREMIER LIGHTING - KS/MO		
△		
△		
△		
REV	DATE	REVISION DESCRIPTION
		BY