

NOTE: LIGHT POLE ATTACHMENT SCHEDULE CHART ON "PAGE 4"

DO NOT SCALE

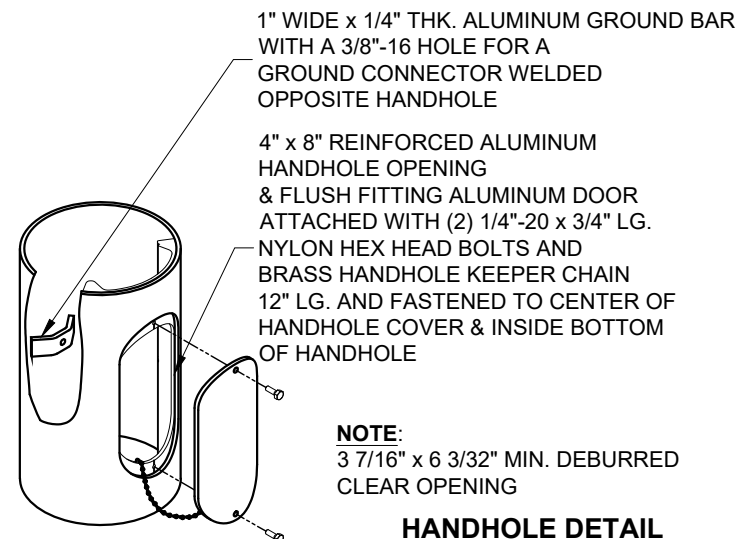
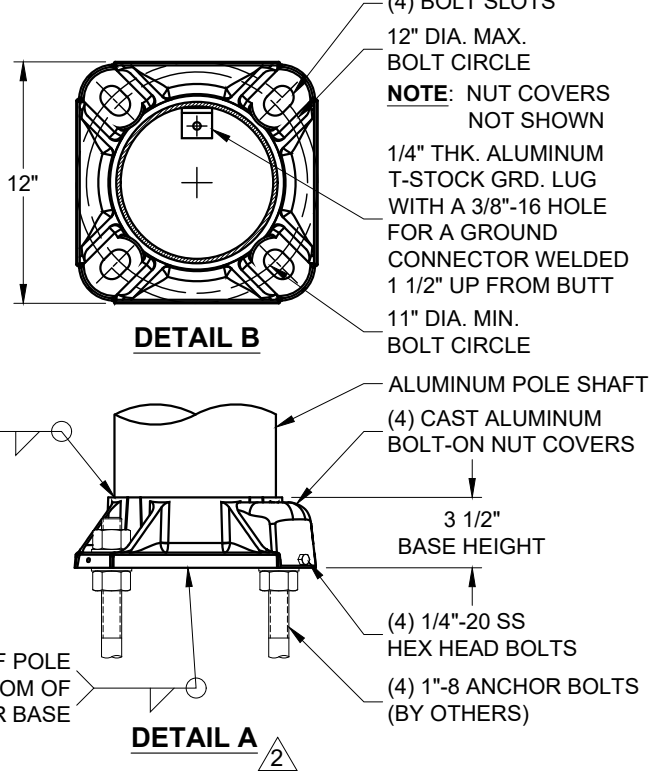
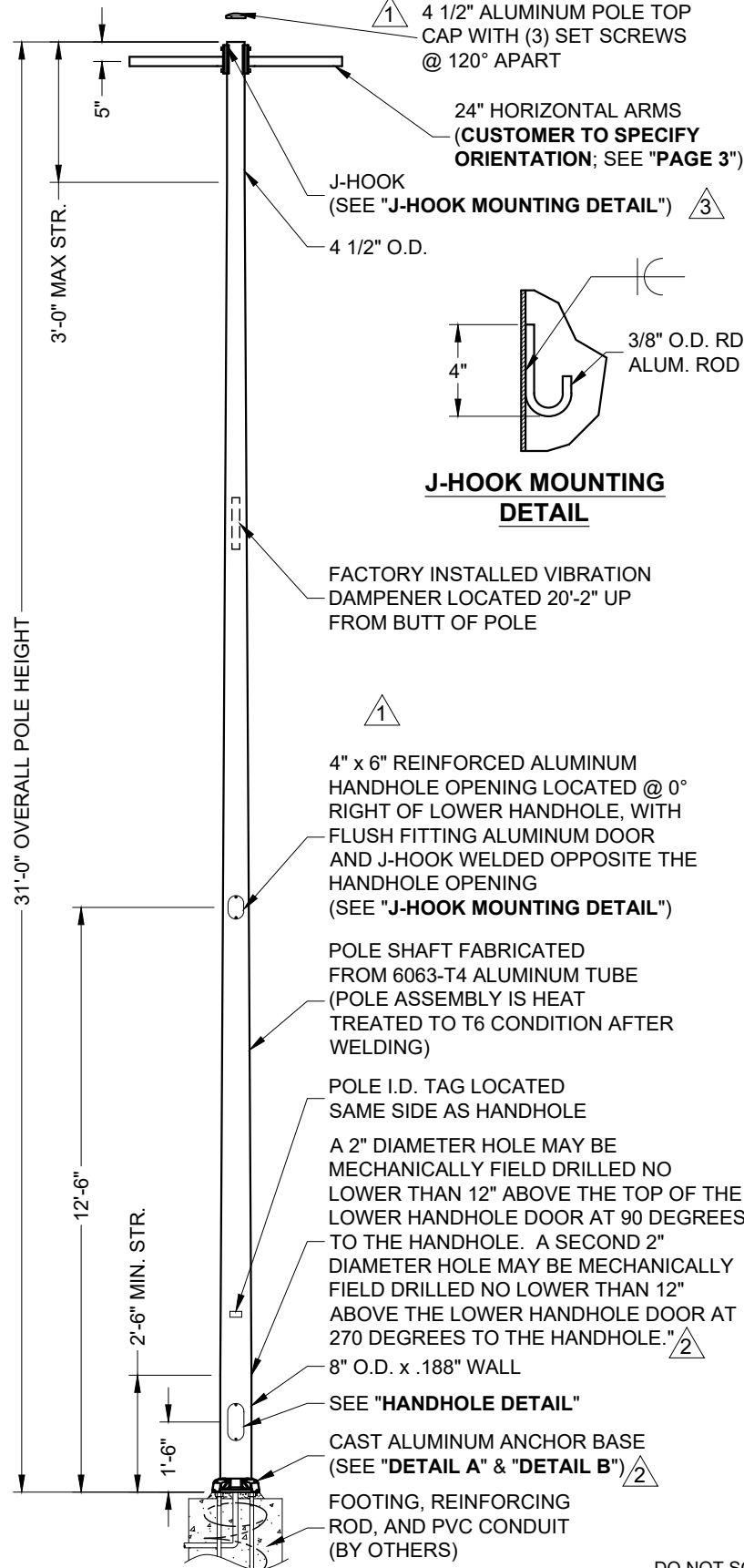
TYPE SP1/SP2

Valmont Industries, Inc. Structures Division
20805 Eaton Ave Farmington, Minnesota 55024-7932
Phone: (651) 463-8990 (800) 899-7577
Fax: (651) 463-3349

TITLE: ANCHOR BASE ALUMINUM POLE		QTY: 7
MODEL NO.: 310045806T4B		DWN BY: PVB
MATERIAL: ALUMINUM ALLOY		CHK'D BY:
FINISH: 100 GRIT SATIN POLISH		APPR BY: JRB
PROJECT: OVERLAND PARK FIRE STATION #41		DATE: 05-31-23
SOLD TO: GRAYBAR ELECTRIC		DWG NO: A42365
SHIP TO:		PAGE: 1 / 4
P.O. NO:		BY:
REP: PREMIER LIGHTING - KS/MO		

****CONFIDENTIAL****
The information contained in this drawing is privileged and confidential, and may be protected from disclosure. Please be aware that any use or dissemination of this drawing may be subject to legal restriction or sanction.

	08-14-23	ADDED 2ND J-HOOK @ POLE TOP	PVB
	06-30-23	REMOVED COLLAR, CHANGED DRILLING/NOTES	PTP
	06-19-23	REV TOP CAP, RMV HH @ 18"	HJT
REV	DATE	REVISION DESCRIPTION	BY



NOTE: LIGHT POLE ATTACHMENT SCHEDULE CHART ON "PAGE 4"

DO NOT SCALE

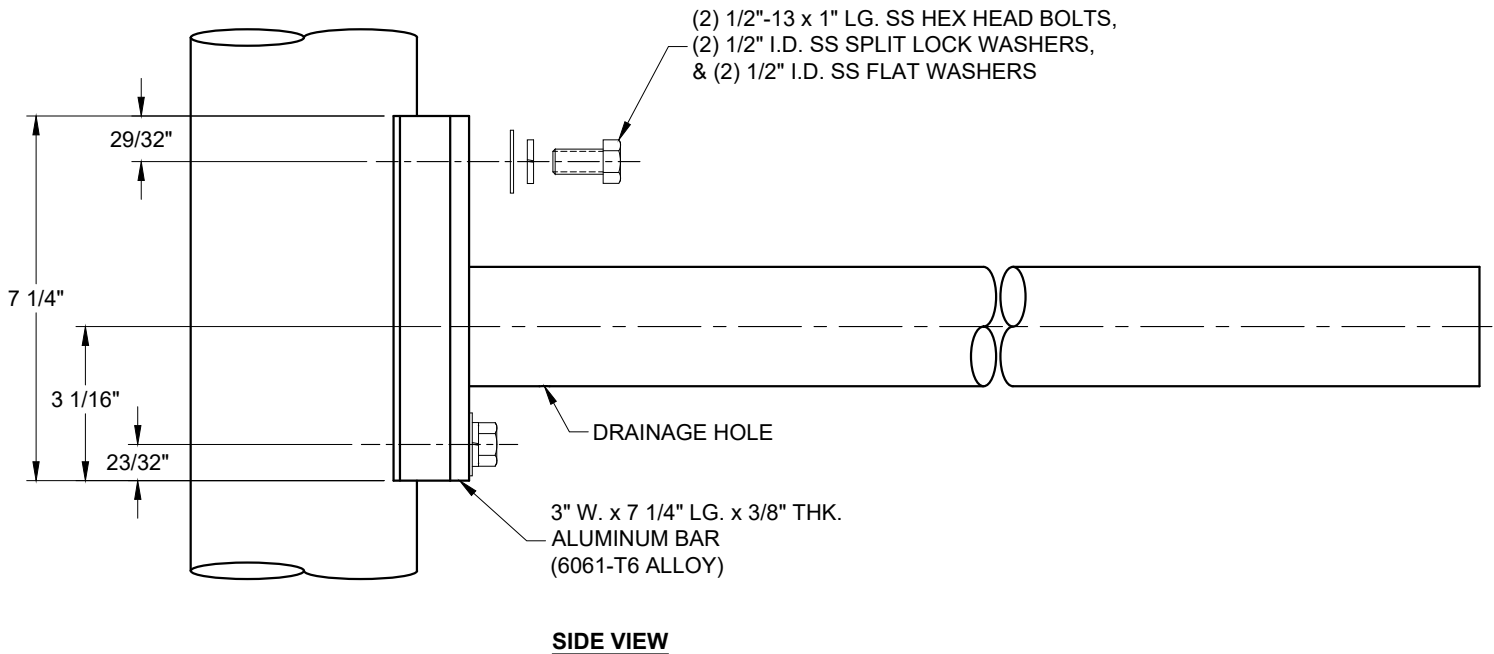
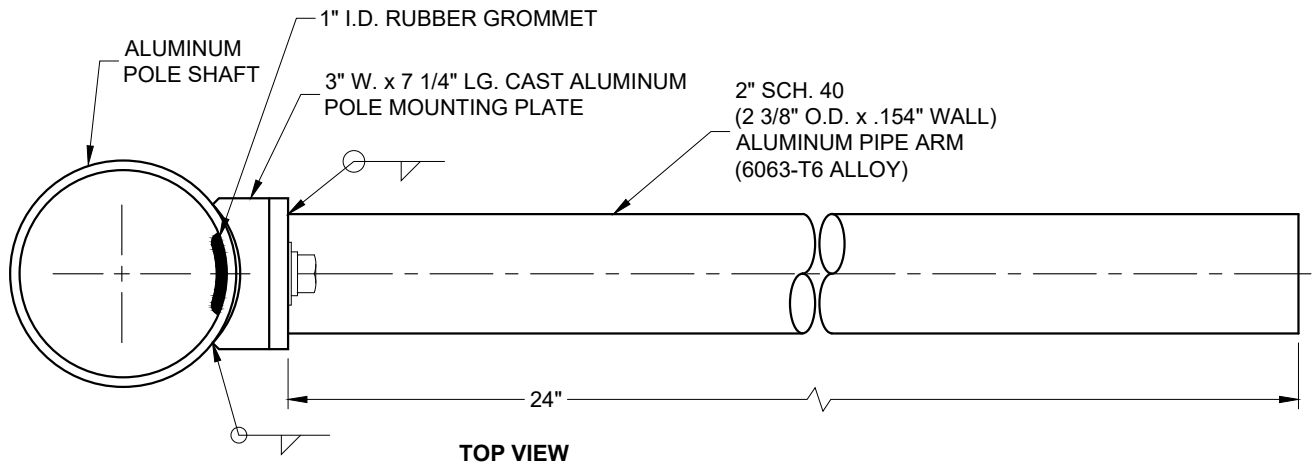
TYPE SP3



Valmont Industries, Inc. Structures Division
20805 Eaton Ave Farmington, Minnesota 55024-7932
Phone: (651) 463-8990 (800) 899-7577
Fax: (651) 463-3349

****CONFIDENTIAL****
The information contained in this drawing is privileged and confidential, and may be protected from disclosure. Please be aware that any use or dissemination of this drawing may be subject to legal restriction or sanction.

TITLE:		ANCHOR BASE ALUMINUM POLE		QTY:		4	
MODEL NO.:		310045806T4B		DWN BY:		PVB	
MATERIAL:		ALUMINUM ALLOY		CHK'D BY:			
FINISH:		100 GRIT SATIN POLISH		APPR BY:		JRB	
PROJECT:		OVERLAND PARK FIRE STATION #41		DATE:		05-31-23	
SOLD TO:		GRAYBAR ELECTRIC		DWG NO.:		A42365	
SHIP TO:				PAGE:		2 / 4	
P.O. NO.:				REV		DATE	
REP:		PREMIER LIGHTING - KS/MO		BY			
	08-14-23	ADDED 2ND J-HOOK @ POLE TOP		PVB			
	06-30-23	REMOVED COLLAR, CHANGED DRILLING/NOTES		PTP			
	06-19-23	REV TOP CAP, RMV HH @ 18"6"		HJT			
REV	DATE	REVISION DESCRIPTION		BY			



DO NOT SCALE



Valmont Industries, Inc. Structures Division
20805 Eaton Ave Farmington, Minnesota 55024-7932
Phone: (651) 463-8990 (800) 899-7577
Fax: (651) 463-3349

TITLE:	S	1 LT SIDE MT BKT HZ 2.4" x 24"L
MODEL NO.:	1HS23824	
MATERIAL:	ALUMINUM ALLOY	
FINISH:	100 GRIT SATIN POLISH	
PROJECT:	OVERLAND PARK FIRE STATION #41	
SOLD TO:	GRAYBAR ELECTRIC	
SHIP TO:		
P.O. NO.:		
REP:	PREMIER LIGHTING - KS/MO	

QTY:	15
DWN BY:	PVB
CHK'D BY:	
APPR BY:	JRB
DATE:	05-31-23
DWG NO.:	A42365

****CONFIDENTIAL****

The information contained in this drawing is privileged and confidential, and may be protected from disclosure. Please be aware that any use or dissemination of this drawing may be subject to legal restriction or sanction.

REV	DATE	REVISION DESCRIPTION	BY

PAGE:	3 / 4
-------	-------

LIGHT POLE ATTACHMENT SCHEDULE				
MOUNTING HEIGHT ABOVE GRADE (FT)	MOUNTING HEIGHT ON POLE (FT)	EQUIPMENT	WEIGHT (LBS)	SIZE
33	31	LED ON 2' ARM	21	0.78 SQ. FT. EPA
33	31	LED ON 2' ARM	21	0.78 SQ. FT. EPA
25	23	WIFI ACCESS POINT	2.1	0.57 SQ. FT. EPA
20	18	CAMERA	11.04	9" DIA. x 16" TALL
20	18	WALL MOUNT ARM 1' EXTENSION	1	1.0 SQ. FT. EPA MAX.
20	18	WALL TO POLE BRACKET	0.25	1.0 SQ. FT. EPA MAX.
6	4	WEATHERPROOF ENCLOSURE	7.4	13.32" x 11.32" x 5.60"
6	4	CCTV MEDIA CONVERTER	0.5	INSIDE ENCLOSURE
4.75	2.75	2" NPT CONDUIT FITTING W/ PLUG	-	-

POLE RATING (PER AASHTO 2013):
 3-SEC GUST WIND SPEED: 90 MPH MAX
 SEE "LIGHT POLE ATTACHMENT SCHEDULE" FOR POLE LOADING.

DO NOT SCALE



Valmont Industries, Inc. Structures Division
 20805 Eaton Ave Farmington, Minnesota 55024-7932
 Phone: (651) 463-8990 (800) 899-7577
 Fax: (651) 463-3349

TITLE:	S LIGHT POLE ATTACHMENT SCHEDULE	QTY:	
MODEL NO.:		DWN BY:	PVB
MATERIAL:		CHK'D BY:	
FINISH:		APPR BY:	JRB
PROJECT:	OVERLAND PARK FIRE STATION #41	DATE:	05-31-23
SOLD TO:	GRAYBAR ELECTRIC	DWG NO.:	A42365
SHIP TO:		PAGE:	
P.O. NO.:		REV	
REP:	PREMIER LIGHTING - KS/MO	DATE	

****CONFIDENTIAL****

The information contained in this drawing is privileged and confidential, and may be protected from disclosure. Please be aware that any use or dissemination of this drawing may be subject to legal restriction or sanction.

REV	DATE	REVISION DESCRIPTION	BY