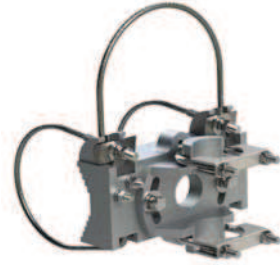


Standard Cable Clamp
(Stainless Steel Hardware)

- * Stainless steel cable attachment system
- * Stainless steel hardware
- * Capable of horizontal or vertical mounting
- * Multiple cable lengths to accommodate 4"-22" masts
- * Includes: saddle, swivel bracket and hardware
- * Supplied in natural Aluminum finish



| Part Number | Band Length | | List Price | Description |
|--------------|-------------|--|------------|---------------------|
| SS-SBC66-SCK | 66 | | | SS Cable Clamp 66" |
| SS-SBC90-SCK | 90 | | | SS Cable Clamp 90" |
| SS-SB120-SCK | 120 | | | SS Cable Clamp 120" |
| SS-SB165-SCK | 165 | | | SS Cable Clamp 165" |

3" Band Clamp

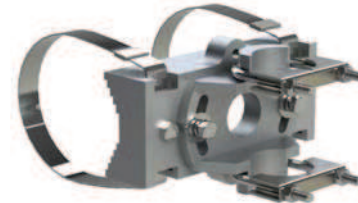
- * Stainless steel band attachment system
- * Yellow Dichromate plated steel hardware
- * Capable of horizontal or vertical mounting
- * Multiple band lengths to accommodate 2"-17" masts
- * Includes: saddle, swivel bracket and hardware
- * Supplied in natural Aluminum finish



| Part Number | Band Length | | List Price | Description |
|-------------|-------------|--|------------|----------------------------|
| SB29-SCK-3 | 29 | | | Band Clamp 29" w/3" Swivel |
| SB42-SCK-3 | 42 | | | Band Clamp 42" w/3" Swivel |
| SB59-SCK-3 | 59 | | | Band Clamp 59" w/3" Swivel |

3" Band Clamp
(Stainless Steel Hardware)

- * Stainless steel band attachment system
- * Stainless steel hardware
- * Capable of horizontal or vertical mounting
- * Multiple band lengths to accommodate 2"-17" masts
- * Includes: saddle, swivel bracket and hardware
- * Supplied in natural Aluminum finish



| Part Number | Band Length | | List Price | Description |
|---------------|-------------|--|------------|-------------------------------|
| SS-SB29-SCK-3 | 29 | | | SS Band Clamp 29" w/3" Swivel |
| SS-SB42-SCK-3 | 42 | | | SS Band Clamp 42" w/3" Swivel |
| SS-SB59-SCK-3 | 59 | | | SS Band Clamp 59" w/3" Swivel |