

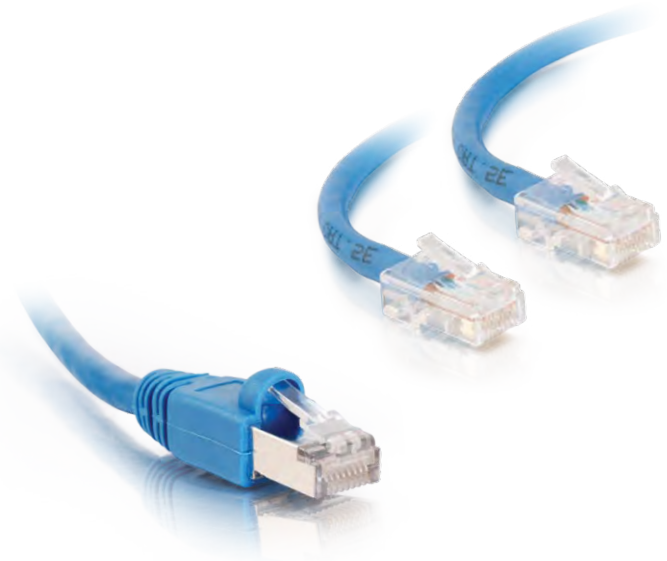
# CAT6 PATCH CABLES

## Cat6 Patch Cables

Quiktron's Cat6 patch cables deliver uncompromising performance and exceptional value. Each cable meets or exceeds Cat6 TIA/EIA-568-B-2.1 standards and are designed to handle bandwidth intensive applications. The pairs in these cables feature a high tolerance twist design that helps maintain the twist spacing up to the termination point. This drastically reduces both impedance and structural return loss (SRL) as compared to standard Cat5e wire and keeps Near-End Crosstalk (NEXT) levels to a minimum.

### Features:

- Connector: 50-micron gold plated RJ45 male to male
- Conductor: 24AWG stranded copper
- Meets or exceeds all Cat6 TIA/EIA-568-B-2.1
- Q-Series Cat6 patch cables are made in the U.S.A. and are available in custom lengths and colors that ship in as little as two business days
- Both Q-Series and Value Series Cat6 patch cables feature a lifetime warranty
- Value Series patch cables available for same day shipping



### Q-Series Cat6 Patch Cables

	Black	Blue	Gray	Green	Orange	Purple	Red	White
Non-Booted	540-135-LLL	540-110-LLL	540-100-LLL	540-120-LLL	540-140-LLL	540-145-LLL	540-130-LLL	540-125-LLL
Booted	541-135-LLL	541-110-LLL	541-100-LLL	541-120-LLL	541-140-LLL	541-145-LLL	541-130-LLL	541-125-LLL
Slimline Booted	541-135-LLL-SLB	541-110-LLL-SLB	541-100-LLL-SLB	541-120-LLL-SLB	541-140-LLL-SLB	541-145-LLL-SLB	541-130-LLL-SLB	541-125-LLL-SLB
Crossover	542-135-LLL	542-110-LLL	542-100-LLL	542-120-LLL	542-140-LLL	542-145-LLL	542-130-LLL	542-125-LLL
Shielded	630-135-LLL	630-110-LLL	630-100-LLL	630-120-LLL	630-140-LLL	630-145-LLL	630-130-LLL	630-125-LLL
Solid Wire, Plenum rated	543-135-LLL	543-110-LLL	543-100-LLL	543-120-LLL	543-140-LLL	543-145-LLL	543-130-LLL	543-125-LLL

LLL – Length can be customized to meet your specifications. When ordering cables please specify length in feet or meters.

### Value Series Cat6 Patch Cables – Shielded Booted

	Black	Blue	Gray	Green	Orange	Red
3ft	576-S35-003	576-S10-003	576-S00-003	576-S20-003	576-S40-003	576-S30-003
5ft	576-S35-005	576-S10-005	576-S00-005	576-S20-005	576-S40-005	576-S30-005
7ft	576-S35-007	576-S10-007	576-S00-007	576-S20-007	576-S40-007	576-S30-007
10ft	576-S35-010	576-S10-010	576-S00-010	576-S20-010	576-S40-010	576-S30-010
14ft	576-S35-014	576-S10-014	576-S00-014	576-S20-014	576-S40-014	576-S30-014
25ft	576-S35-025	576-S10-025	576-S00-025	576-S20-025	576-S40-025	576-S30-025
35ft	576-S35-035	576-S10-035	576-S00-035	576-S20-035	576-S40-035	576-S30-035

### Value Series Cat6 Patch Cables – Booted

	Black	Blue	Gray	Green	Orange	Purple	Red	White	Yellow
1ft	576-135-001	576-110-001	576-100-001	576-120-001	576-140-001	576-145-001	576-130-001	576-125-001	576-115-001
3ft	576-135-003	576-110-003	576-100-003	576-120-003	576-140-003	576-145-003	576-130-003	576-125-003	576-115-003
5ft	576-135-005	576-110-005	576-100-005	576-120-005	576-140-005	576-145-005	576-130-005	576-125-005	576-115-005
7ft	576-135-007	576-110-007	576-100-007	576-120-007	576-140-007	576-145-007	576-130-007	576-125-007	576-115-007
10ft	576-135-010	576-110-010	576-100-010	576-120-010	576-140-010	576-145-010	576-130-010	576-125-010	576-115-010
14ft	576-135-014	576-110-014	576-100-014	576-120-014	576-140-014	576-145-014	576-130-014	576-125-014	576-115-014
25ft	576-135-025	576-110-025	576-100-025	576-120-025	576-140-025	576-145-025	576-130-025	576-125-025	576-115-025
50ft	576-135-050	576-110-050	576-100-050	576-120-050	576-140-050	576-145-050	576-130-050	576-125-050	576-115-050

### Value Series Cat6 Patch Cables – Non-Booted

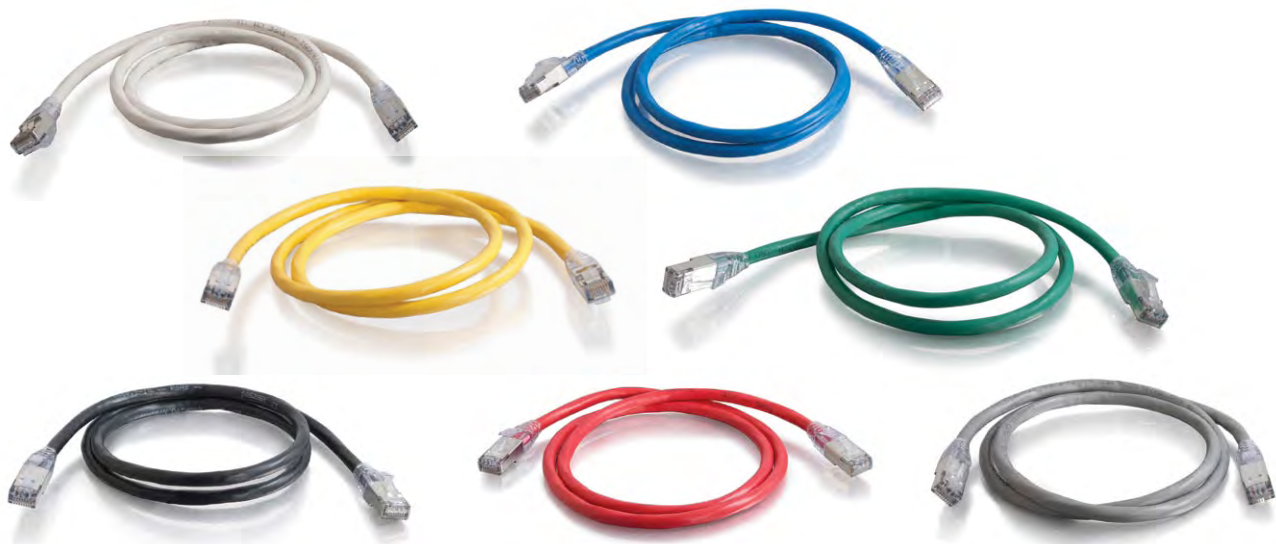
	Black	Blue	Gray	Green	Orange	Purple	Red	White	Yellow
1ft	566-135-001	566-110-001	566-100-001	566-120-001	566-140-001	566-145-001	566-130-001	566-125-001	566-115-001
3ft	566-135-003	566-110-003	566-100-003	566-120-003	566-140-003	566-145-003	566-130-003	566-125-003	566-115-003
5ft	566-135-005	566-110-005	566-100-005	566-120-005	566-140-005	566-145-005	566-130-005	566-125-005	566-115-005
7ft	566-135-007	566-110-007	566-100-007	566-120-007	566-140-007	566-145-007	566-130-007	566-125-007	566-115-007
10ft	566-135-010	566-110-010	566-100-010	566-120-010	566-140-010	566-145-010	566-130-010	566-125-010	566-115-010
14ft	566-135-014	566-110-014	566-100-014	566-120-014	566-140-014	566-145-014	566-130-014	566-125-014	566-115-014
25ft	566-135-025	566-110-025	566-100-025	566-120-025	566-140-025	566-145-025	566-130-025	566-125-025	566-115-025
50ft	566-135-050	566-110-050	566-100-050	566-120-050	566-140-050	566-145-050	566-130-050	566-125-050	566-115-050

## Cat6a Network Cables

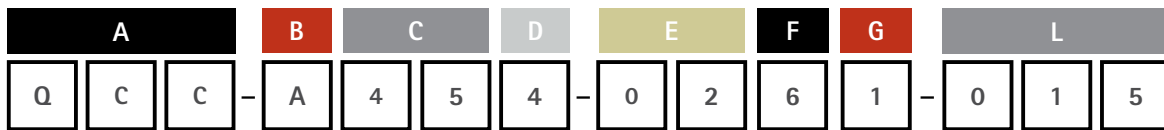
Quiktron's Cat6a network cables enable 10 gigabit data transmission over a twisted pair copper cable, allowing connection distances up to 100 meters. The Cat6a draft extends the Cat6 electrical specifications from 250MHz to 500MHz. It also proposes a new measurement for Power-Sum Alien Crosstalk to 500MHz.

### Features:

- Backwards compatible with existing category standards
- Supports 10Gbit/s data rates up to a maximum distance of 100 meters
- Supports IEEE 802.3af and is DTE power compliant
- Compatible with T568A and T568B wiring
- Provides NEXT performance beyond 600MHz
- Fluke DTX tested to meet or exceed ANSI/TIA 568C.2 Category 6a Channel limits



## Part Number Generator



**Example:** QCC-A454-0261-015 = Q-Series Category Cable, Category 6a, RJ45-Blunt, 4 Pair, 568B/568B, CMG SCTP, Blue, 15 Feet

**A**  
3 Digit Series:  
QCC Q-Series Category Cables

**B**  
Category:  
A Category 6a

**C**  
Connectors:  
40 RJ45-Blunt  
45 RJ45-RJ45

**D**  
Pairs:  
4 4 pair

**E**  
Pinout:  
01 568A/568B  
02 568B/568B

**F**  
Cable Type:  
6 CMG SCTP

**G**  
Cable Color:  
1 Blue      6 White  
2 Orange    7 Red  
3 Green     8 Black  
5 Gray      9 Yellow

**L**  
Length in Feet: