

Catalog Number:
1253743
CP3BR5424110AO01

120/240 VAC, 1-phase, 3-wire; 400 Amps Maximum, (see Main circuit breaker rating)
CP3B-R Rainproof - Type 3R, Aluminum Enclosure, unpainted
Enclosed Industrial Control - Suitable ONLY for Use as Service Equipment
The short circuit current rating is 10,000 RMS symmetrical amperes maximum at 240volts maximum, in accordance with the table below, but is limited to the lowest short circuit rating of any installed circuit breaker. Watthour meter is not included in the short circuit rating. Replacement circuit breakers must be of the same type and rating.

METERED CIRCUIT DIRECTORY (LUG-LUG)

No.	Amp.	Poles	Circuit Description
1	400	2	MAIN
2			
3			
4			
5			
6			

METERED CIRCUIT DIRECTORY (PANELBOARD)

No.	Amp.	Poles	Circuit Description	No.	Amp.	Poles	Circuit Description
1	60	2	EVSE	2	60	2	EVSE
3				4			
5	60	2	EVSE	6	60	2	EVSE
7				8			
9	60	2	FUTURE EVSE	10	60	2	FUTURE EVSE
11				12			
13	60	2	FUTURE EVSE	14	60	2	FUTURE EVSE
15				16			
17				18			
19				20			
21				22			
23				24			
25				26			
27				28			
29				30			

AIC RATING	MAIN	BRANCHES
10K	SIEMENS TYPE JXD2	SIEMENS TYPE BL

Circuit breaker handle trip position is between “ON” and “OFF”. To reset breaker, move handle to the full “OFF” position, then to full “ON”.

Terminal Information, Use AL/CU conductors

FIELD WIRED CONNECTORS					BUS CONNECTIONS			For Equipment Ground ONLY, multiple conductors in a single opening are permissible as indicated below		
		SLOTTED HEAD SCREWS			THREADFORMING SCREWS					
Socket Size	Torque Lb.-In.	AWG Wire Size	Small Hole	Large Hole	SCREW	MAT'L	Torque, Lb.-In.	AWG Wire Size	Small Hole	Large Hole
5/16"	275	#14-10	20	35	10-24	AL	30	#14-10 #10 #8 - 6 #4 - 1/0	1-2	1-2
3/8"	375	#8	25	40	10-24	CU	50		1	3
1/2"	500	#6	35	45	1/4-20	AL	50		1	1
9/16"	600	#4	-	45	1/4-20	CU	72		1	1
		#3-1/0	-	50						

Shipping may loosen electrical connections. CHECK TIGHTNESS BEFORE ENERGIZING.

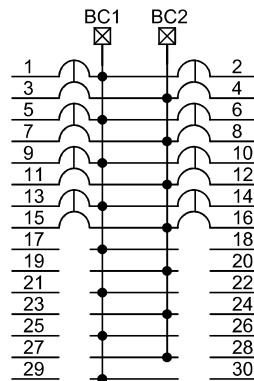
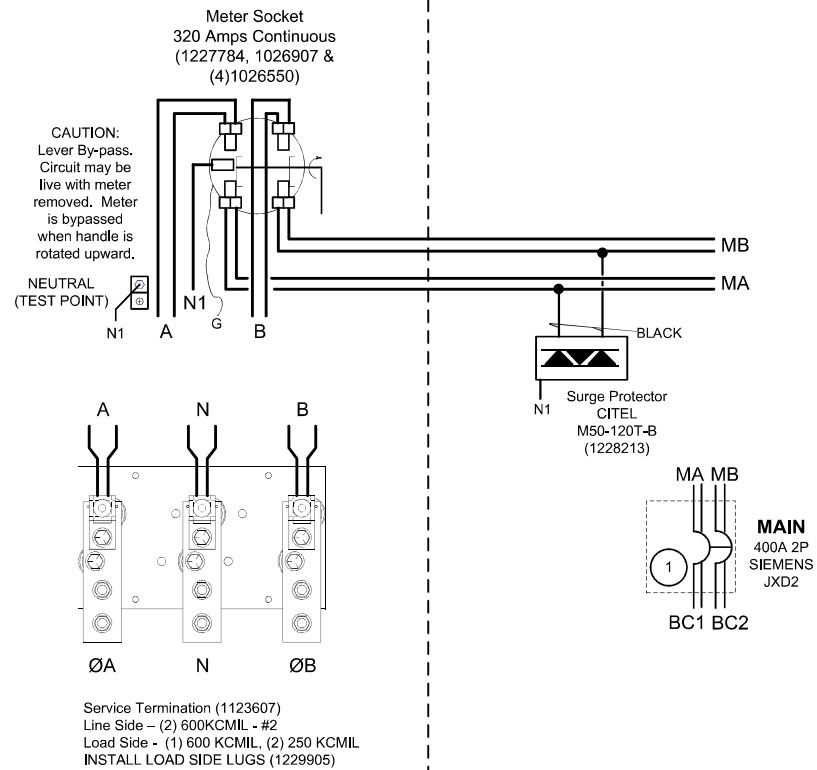
BONDED NEUTRAL – Remove neutral load conductors for test purposes only!

FIELD INSTALLED conductors shall be 60°C, 75°C, or 90°C, sized to 60°C rating for 110 amps or less; and 75°C or 90°C for 125 amps and above.



Catalog Number:
1253743

120/240 VAC, 1-phase, 3-wire; 400 Amps Maximum, (see Main circuit breaker rating)
CP3B-R Rainproof - Type 3R, Aluminum Enclosure, unpainted
Enclosed Industrial Control - Suitable ONLY for Use as Service Equipment



Panelboard (1187526)
Siemens

