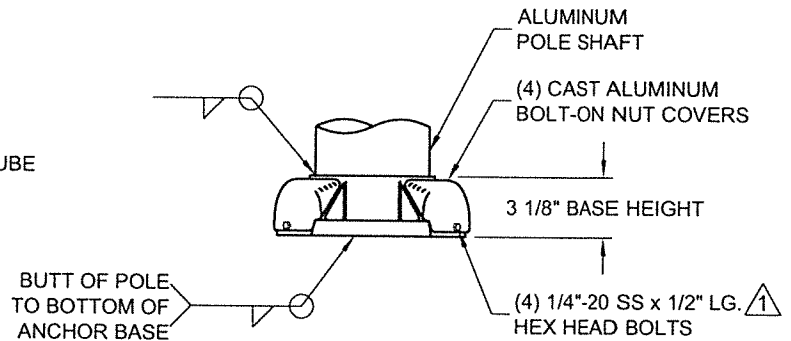


**DETAIL B**



**DETAIL A**

**POLE RATING (PER AASHTO 2013):**  
 3-SEC GUST WIND SPEED: 90 MPH MAX  
 EPA (LUMINAIRE): 1.3 SQ. FT. MAX  
 WEIGHT (LUMINAIRE): 55 LBS MAX

POLE SHAFT FABRICATED FROM 6063-T4 ALUMINUM TUBE (POLE ASSEMBLY IS HEAT TREATED TO T6 CONDITION AFTER WELDING)

POLE I.D. TAG LOCATED SAME SIDE AS HANDHOLE (SEE "PAGE 18")

6" O.D. x .156" WALL

2'-0" LG. x .156" THK. REINFORCING SLEEVE (6063-T6 ALLOY)

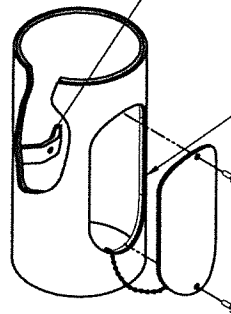
SEE "HANDHOLE DETAIL"

CAST ALUMINUM ANCHOR BASE (SEE "DETAIL A" & "DETAIL B")

1" WIDE x 1/4" THK. ALUMINUM GROUND BAR WITH A 3/8"-16 HOLE FOR A GROUND CONNECTOR WELDED OPPOSITE HANDHOLE

4" x 6" REINFORCED ALUMINUM HANDHOLE OPENING & FLUSH FITTING ALUMINUM DOOR ATTACHED WITH (2) 1/4"-20 x 3/4" LG. NYLON HEX HEAD BOLTS AND BRASS HANDHOLE KEEPER CHAIN 12" LG. AND FASTENED TO CENTER OF HANDHOLE COVER & INSIDE BOTTOM OF HANDHOLE

**NOTE:**  
 3" x 3 15/16" MIN. DEBURRED CLEAR OPENING



**HANDHOLE DETAIL**

DO NOT SCALE

TYPE OP14



Valmont Industries, Inc. Structures Division  
 20805 Eaton Ave Farmington, Minnesota 55024-7932  
 Phone: (651) 463-8990 (800) 899-7577  
 Fax: (651) 463-3349

**\*\*CONFIDENTIAL\*\***

The information contained in this drawing is privileged and confidential, and may be protected from disclosure. Please be aware that any use or dissemination of this drawing may be subject to legal restriction or sanction.

TITLE: S ANCHOR BASE POLE		QTY:	
MODEL NO.: 140030605T4A		OWN BY: PVB	
MATERIAL: ALUMINUM ALLOY		CHK'D BY:	
FINISH: 100 GRIT SATIN POLISH		APPR BY: MPJ	
PROJECT: CITY OF OVERLAND PARK, KS		DATE: 09-22-17	
SOLD TO:		DWG NO: DSOP	
SHIP TO:		PAGE:	
P.O. NO:		BY: 1/18	
REP: POWER EQUIPMENT SALES			
△			
△			
△	04/06/18	UPDATED NOTES	KPS
REV	DATE	REVISION DESCRIPTION	BY