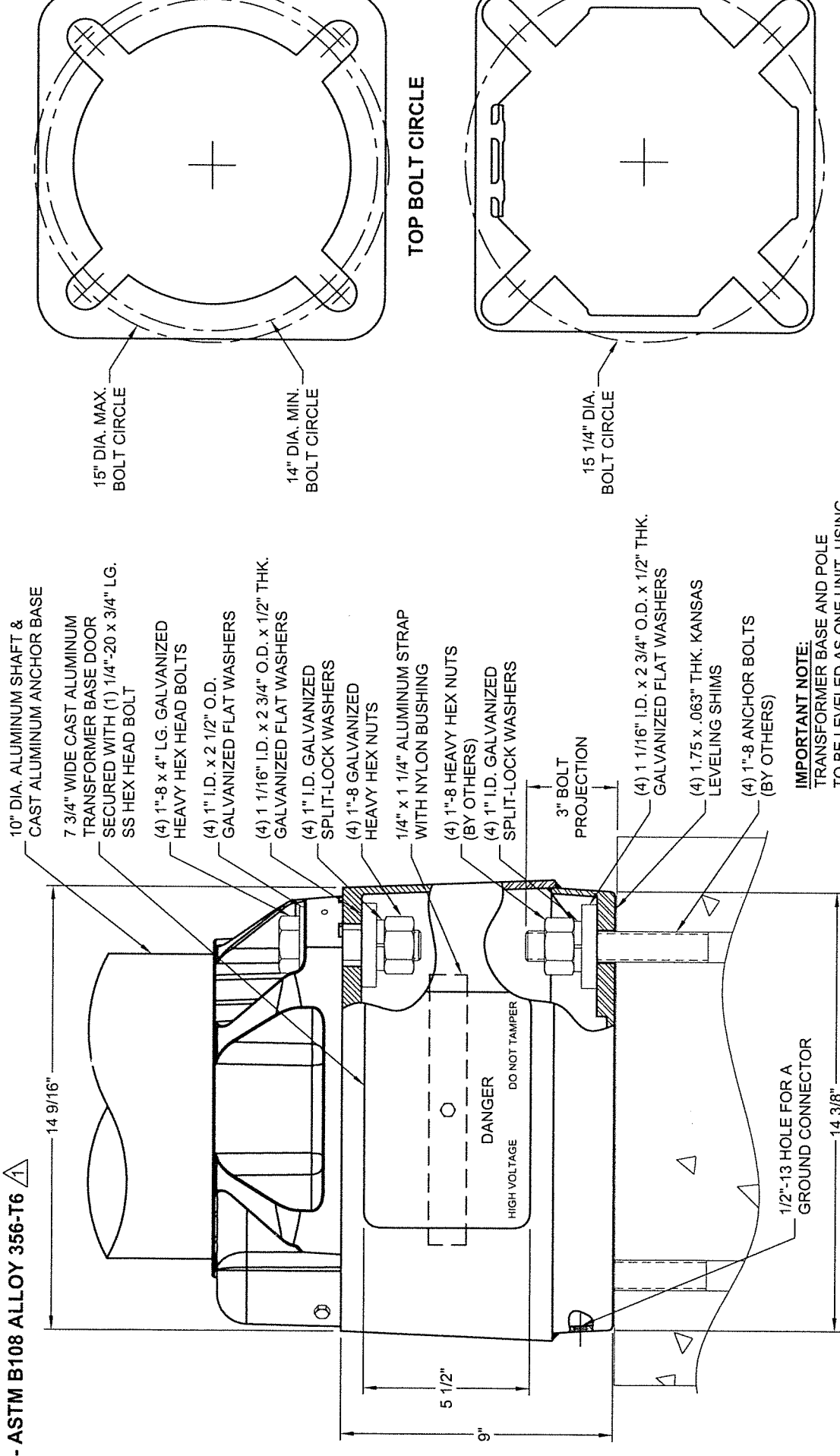


-ASTM B108 ALLOY 356-T6



TOP BOLT CIRCLE

BOTTOM BOLT CIRCLE

15" DIA. MAX. BOLT CIRCLE
14" DIA. MIN. BOLT CIRCLE
15 1/4" DIA. BOLT CIRCLE

IMPORTANT NOTE:
TRANSFORMER BASE AND POLE TO BE LEVELED AS ONE UNIT, USING LEVELING SHIMS IF REQUIRED.

DO NOT SCALE

valmont
Valmont Industries, Inc. Structures Division
20805 Eaton Ave Farmington, Minnesota 55024-7932
Phone: (651) 463-8990 (800) 899-7577
Fax: (651) 463-3349

****CONFIDENTIAL****
The information contained in this drawing is privileged and confidential, and may be protected from disclosure. Please be aware that any use or dissemination of this drawing may be subject to legal restriction or sanction.

CAUTION
1985 AASHTO CS-735
BEFORE THE INSTALLATION OF THIS BASE IN SERVICE, USER SHOULD ALWAYS CONSULT WITH AUTHORIZED DISTRIBUTOR REGARDING PROPOSED APPLICATION, LOADING TO BE SUSTAINED AND INSTALLATION INSTRUCTIONS. FAILURE(S) CAN RESULT FROM MISAPPLICATION, OVERLOADING, IMPROPER LOADING OR INCORRECT INSTALLATION. TO APPROACH OPTIMUM STATIC LOADS, USE THE LARGEST POSSIBLE BOLT CIRCLES AND USE STEEL WASHER SIZES SPECIFIED BELOW.

FOR 1 1/2" THRU 1 5/8" DIA. TOP BOLT CIRCLES
FOR 1 1/2" THRU 1 3/4" DIA. BOTTOM BOLT CIRCLES
USE 2 3/4" DIA. X 1 1/16" OR 1 5/16" I.D. X 1 1/2" TH. WASHERS TOP AND BOTTOM

FOR OPTIMUM PERFORMANCE, MOUNT TRANSFORMER BASE ON A FLAT SURFACE. SHIMS MAY BE REQUIRED. IF GAPS ARE PRESENT, THOROUGHLY FILL WITH EPOXY BONDING GROUT. TORQUE GROUND MOUNTING NUTS TO 150 FT. LBS.

BREAKAWAY BASE
APPROVED BY F.H.M.A. TO 085
AASHTO REQUIREMENTS

QTY:	
OWN BY:	PVB
CHK'D BY:	
APPR BY:	MS
DATE:	09-22-17
DWG NO:	
DSOP:	
PAGE:	KPS
BY:	17/18

REVISION DESCRIPTION