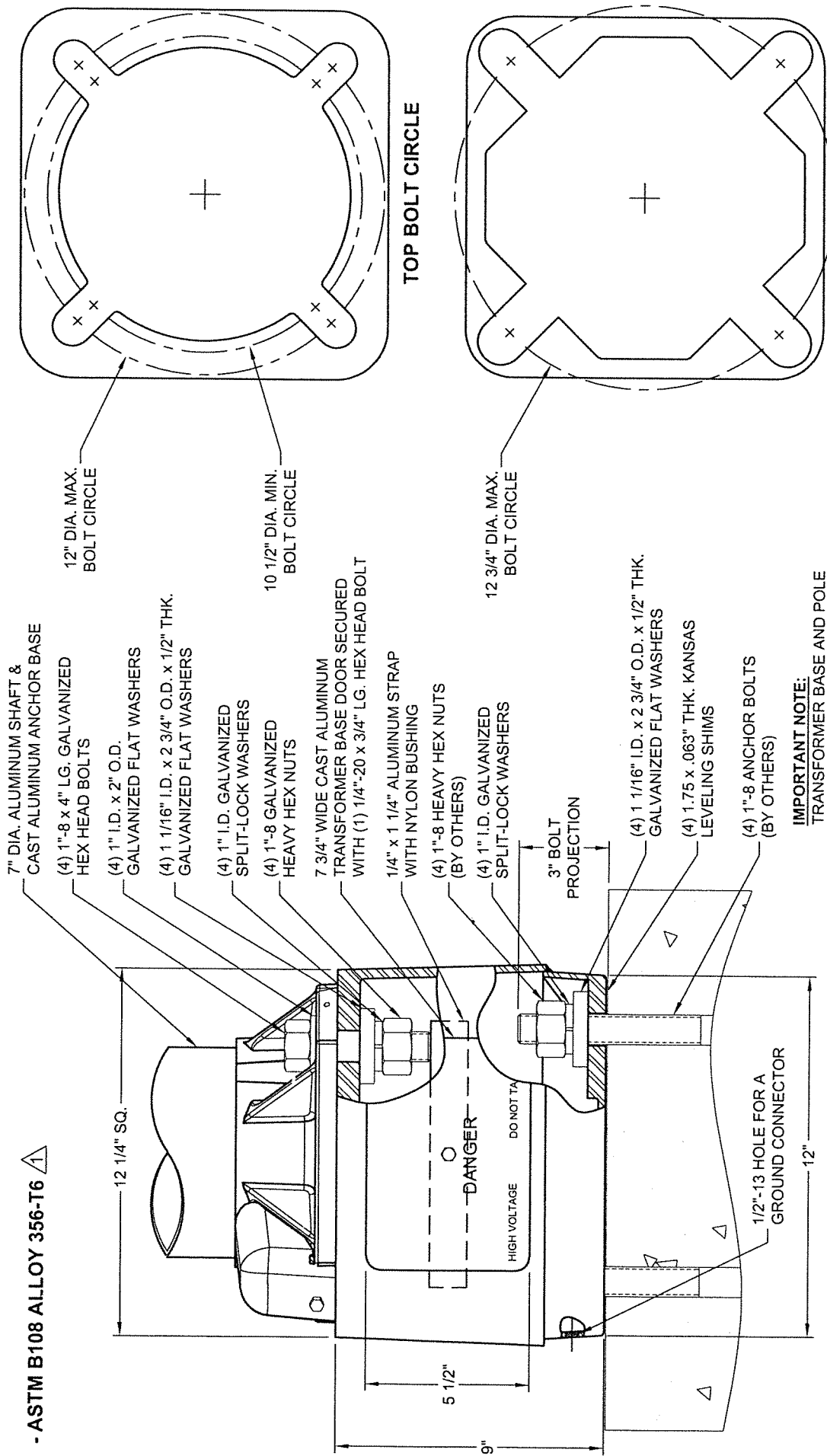


**- ASTM B108 ALLOY 356-T6**



**TOP BOLT CIRCLE**  
12" DIA. MAX. BOLT CIRCLE  
10 1/2" DIA. MIN. BOLT CIRCLE

**BOTTOM BOLT CIRCLE**  
12 3/4" DIA. MAX. BOLT CIRCLE

**IMPORTANT NOTE:**  
TRANSFORMER BASE AND POLE TO BE LEVELED AS ONE UNIT, USING LEVELING SHIMS IF REQUIRED.

**DO NOT SCALE**

QTY:	
DWN BY:	PVB
CHK'D BY:	
APPR BY:	MP
DATE:	09-22-17
DWG NO.:	
DSOP:	
PAGE:	KPS
BY:	15 / 18

TITLE:	S		
MODEL NO.:	TBASE 11.5"-12.5" KANSAS 7" 9"		
MATERIAL:	ALUMINUM ALLOY		
FINISH:	SATIN FINISH		
PROJECT:	CITY OF OVERLAND PARK, KS		
SOLD TO:			
SHIP TO:			
P.O. NO.:			
REP.:	POWER EQUIPMENT SALES		
REV	DATE	ADDED NOTE	REVISION DESCRIPTION
△			
△	04/06/18		

**valmont**

Valmont Industries, Inc. Structures Division  
20805 Eaton Ave Farmington, Minnesota 55024-7932  
Phone: (651) 463-8990 (800) 899-7577  
Fax: (651) 463-3349

**\*\*CONFIDENTIAL\*\***

The information contained in this drawing is privileged and confidential, and may be protected from disclosure. Please be aware that any use or dissemination of this drawing may be subject to legal restriction or sanction.

**CAUTION**

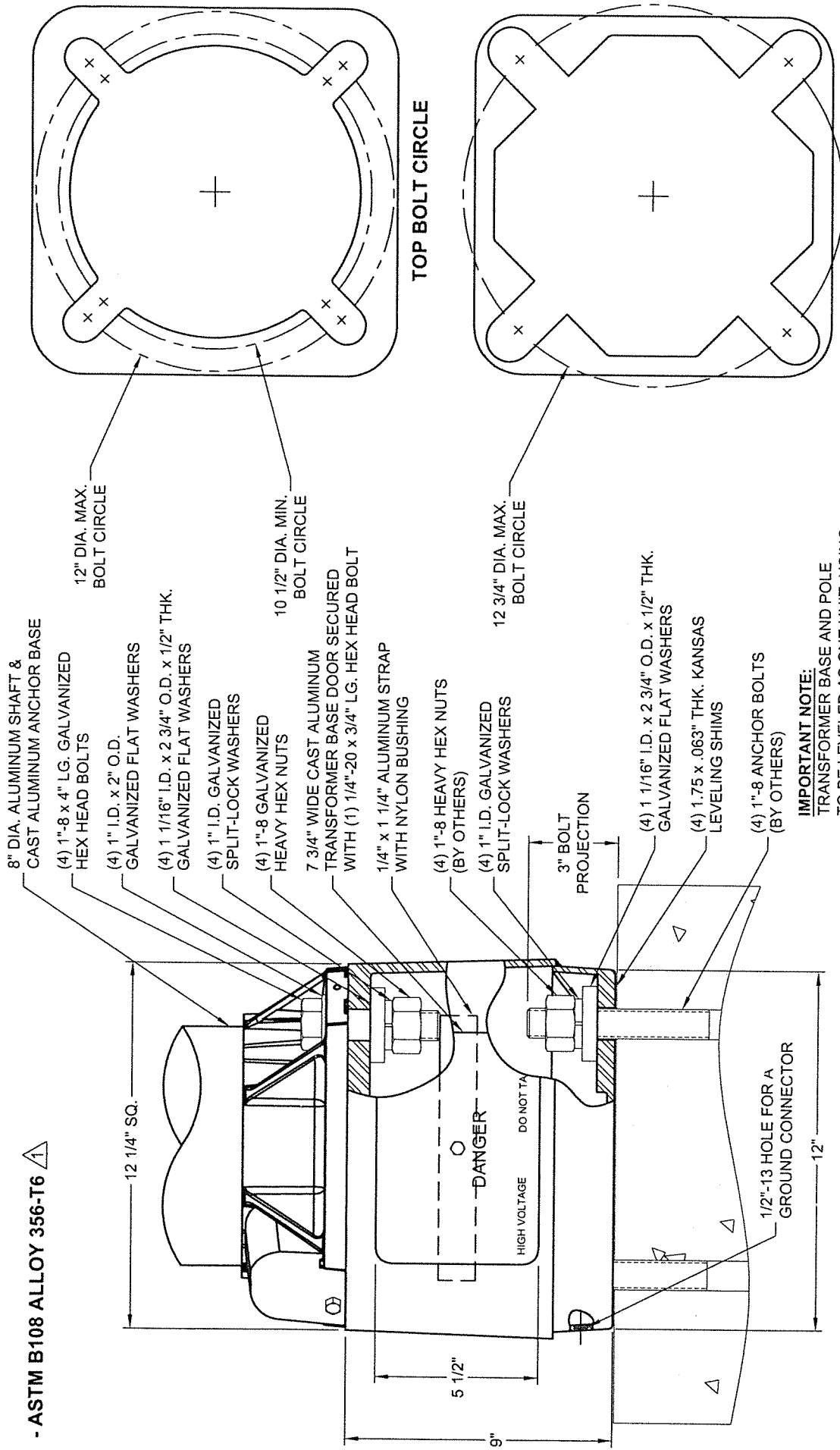
BEFORE THE INSTALLATION OF THIS BASE IN SERVICE, USER SHOULD ALWAYS CONSULT WITH AUTHORIZED DISTRIBUTOR REGARDING PROPOSED APPLICATION, LOADING TO BE SUSTAINED AND INSTALLATION METHODS TO PREVENT OVERLOADING, PROPER MISAPPLICATION, OVERLOADING, PROPER LOADING OR INCORRECT INSTALLATION.

TO APPROACH OPTIMUM STATIC LOADS, USE THE LARGEST POSSIBLE BOLT CIRCLES AND USE STEEL WASHER SIZES SPECIFIED BELOW.

FOR 10 1/2" THRU 12" DIA. TOP BOLT CIRCLES  
FOR 10" THRU 12 3/4" DIA. BOTTOM BOLT CIRCLES  
USE 2 3/4" DIA. X 1 1/16" OR 1 5/16" I.D. X 1/2" TK. WASHERS TOP AND BOTTOM FOR OPTIMUM PERFORMANCE. MOUNT TRANSFORMER BASE ON A FLAT AND LEVEL FOUNDATION SURFACE. SHIM BASE WHEN REQUIRED. IF GAPS ARE PRESENT, THOROUGHLY FILL VOIDS WITH A NON-SHRINK GROUT. TORQUE GROUND MOUNTING NUTS TO 150 FT. LBS.

**BREAKAWAY BASE**  
APPROVED BY F.H.W.A. TO 1985  
AASHTO REQUIREMENTS

**- ASTM B108 ALLOY 356-T6**



**CAUTION**  
 (REF. TB2) 1985 AASHTO CS-300  
 BEFORE THE INSTALLATION OF THIS BASE IN SERVICE, USER SHOULD CONSULT WITH AUTHORIZED DISTRIBUTOR REGARDING PROPOSED APPLICATION. FAILURE TO FOLLOW APPLICATION INSTRUCTIONS, OVERLOADING/PROPER LOADING OR INCORRECT INSTALLATION, TO APPROACH OPTIMUM STATIC LOADS, USE THE LARGEST POSSIBLE BOLT CIRCLES AND USE STEEL WASHER SIZES SPECIFIED BELOW:  
 FOR 10 1/2" THRU 12" DIA. TOP BOLT CIRCLES  
 FOR 10" THRU 12 3/4" DIA. BOTTOM BOLT CIRCLES  
 USE 2 3/4" DIA. X 1 1/16" OR 1 5/16" I.D. X 1/2" TH. WASHERS TOP AND BOTTOM  
 FOR OPTIMUM PERFORMANCE, MOUNT TRANSFORMER BASE ON A FLAT AND LEVEL FOUNDATION SURFACE. SHIM BASE WITH A NON-SHRINK GROUT. TORQUE GROUND MOUNTING NUTS TO 150 FT. LBS.

**BREAKAWAY BASE**  
 APPROVED BY F.H.W.A. TO 1985 AASHTO REQUIREMENTS



Valmont Industries, Inc. Structures Division  
 20805 Eaton Ave Farmington, Minnesota 55024-7932  
 Phone: (651) 463-8990 (800) 899-7577  
 Fax: (651) 463-3349

**\*\*CONFIDENTIAL\*\***  
 The information contained in this drawing is privileged and confidential, and may be protected from disclosure. Please be aware that any use or dissemination of this drawing may be subject to legal restriction or sanction.

TITLE: S TBASE 11.5"-12.5" KANSAS 8" 9"		QTY:
MODEL NO.: 08R115125B9K	OWN BY: PVB	
MATERIAL: ALUMINUM ALLOY	CHK'D BY:	
FINISH: SATIN FINISH	APPR BY: MP	
PROJECT: CITY OF OVERLAND PARK, KS	DATE: 09-22-17	
SOLD TO:	DWG NO:	
SHIP TO:	DSOP	
P.O. NO:	KPS	
REP: POWER EQUIPMENT SALES	BY: 16 / 18	
REV / DATE	ADDED NOTE	REVISION DESCRIPTION

**TOP BOLT CIRCLE**  
 12" DIA. MAX. BOLT CIRCLE  
 10 1/2" DIA. MIN. BOLT CIRCLE

**BOTTOM BOLT CIRCLE**  
 12 3/4" DIA. MAX. BOLT CIRCLE

**IMPORTANT NOTE:**  
 TRANSFORMER BASE AND POLE TO BE LEVELED AS ONE UNIT, USING LEVELING SHIMS IF REQUIRED.

DO NOT SCALE

TYPE OP CS-300 T-BASE