

City Hall • 8500 Santa Fe Drive
Overland Park, Kansas 66212
913/895-6040 • Fax 913/895-5055

www.opkansas.org

December 8, 2017

Environmental Services Section
Kansas Department of Wildlife, Parks and Tourism (KDWPT)
512 SE 25th Avenue
Pratt, KS 67124

FIRE TRAINING CENTER PARKING LOT (MR-1884)
PROJECT SITE LOCATION REVIEW

Dear Sir/Madam:

The City of Overland Park, Kansas is working on final design plans for parking lot reconstruction of the City's Fire Training Center, located at 12401 Hemlock Street in Overland Park. The project is located in Johnson County, Kansas in Sections 19, Range 25E, Township 13S (shown on attached map). The project includes reconstruction of the existing parking lot with concrete, replacement of curb and gutter, new sidewalk, signage, and pavement markings. This letter serves as our request for an environmental review of the proposed project.

Please don't hesitate to contact me at (913) 895-6193 or zachary.matteo@opkansas.org, if you have any questions.

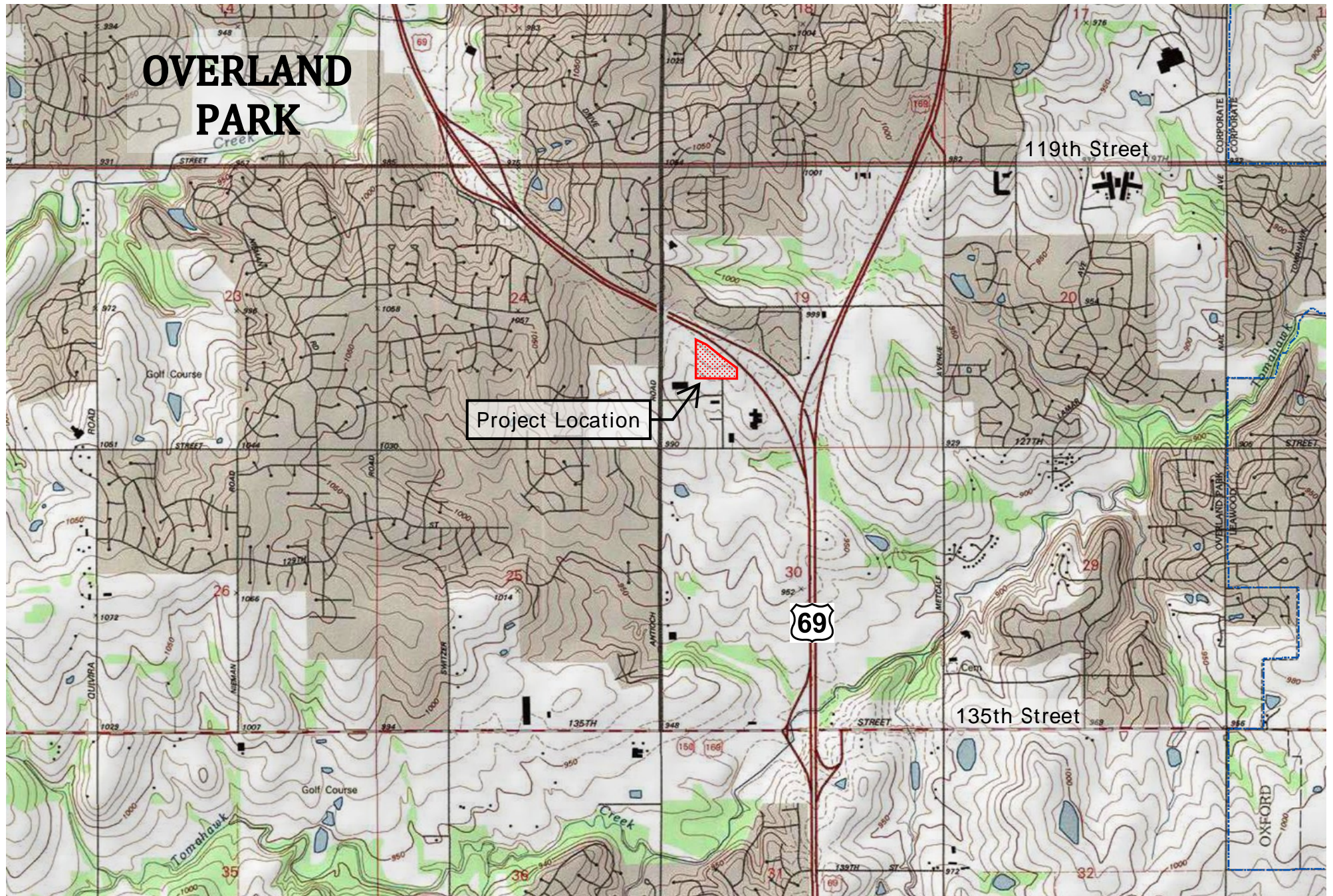
Sincerely,



ZACH MATTEO, P.E.
CIVIL ENGINEER SR

Attachments: Location Map

Email: ess@ksoutdoors.com, KDWPT



PROJECT LOCATION MAP

FIRE TRAINING CENTER PARKING LOT

