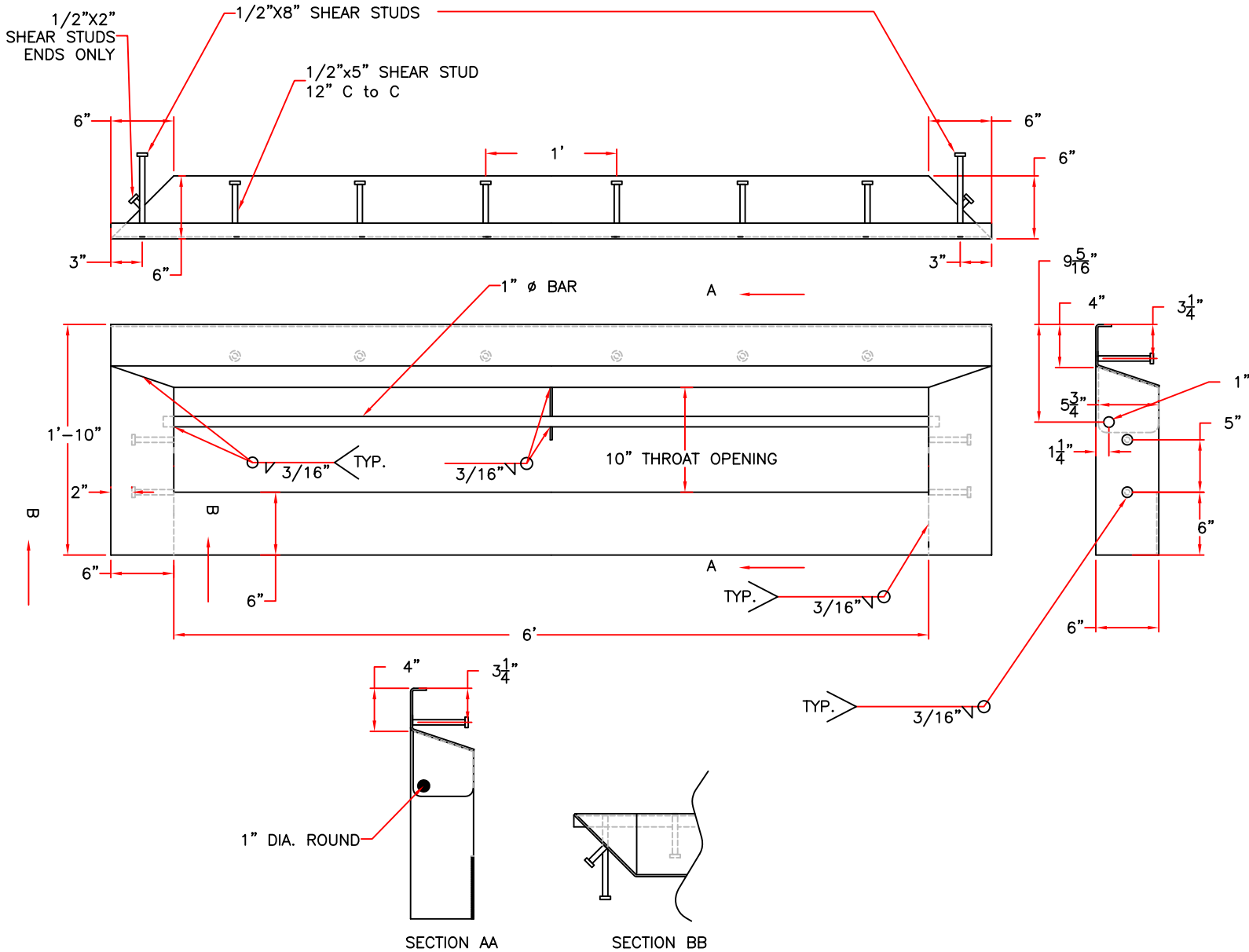


10" Throat Inlet x 6' Cast in Place



NOTES:

1. ALL MATERIAL CONFORMS TO ASTM A-36.
2. CURB INLET BODY IS TO BE 3/16" PLATE.
3. AFTER FABRICATION UNIT TO BE HOT DIP GALVANIZED PER ASTM A123

Product Number

061006001

Design Features

- Materials
ASTM A-36
- Design Load
N/A
- Open Area
N/A
- Coating
Galvanized
- √ Designates Machined Surface

Certification

- NPR13-0395:
- Weight: 118 Lbs.
- Additional Certification
- Country of Origin: USA

Drawing Revision

01/17/2013 Designer: BDD
04/04/2013 Revised By: BDD

Disclaimer

Weights (lbs/kg), dimensions (inches/mm) and drawings provided for your guidance. We reserve the right to modify specifications without prior notice.

CONFIDENTIAL: This drawing is the property of EJ Group, Inc. and embodies confidential information, registered marks, patents, trade secret information, and/or know-how that is the property of EJ Group, Inc. Copyright © 2011 EJ Group, Inc. All rights reserved.

Contact

800 626 4653
ejco.com