

Wattles



A.S.P. ENTERPRISES, INC.
Your GeoSource Distributor

109 N.W. Victoria Dr. • Lee's Summit, MO 64086

816.554.1191 • 816.554.2262 - Fax

Toll Free 800.519.2304

Geosynthetics
Geotextiles/Geogrids
Geomembranes
Drainage
Erosion Control
Gabions
Blankets

\$10,000 FINE

REGIONAL WATER CONTROL BOARD
WATER CODE SECTION 13308

Rolled blankets like this one may flatten and become ineffective, resulting in massive fines on your jobsite.

CUTTING CORNERS IS A SLIPPERY SLOPE

Insist on patented, proven Earth Saver® Rice Straw Wattles.



Now that's a wattle!
9", 12" and 20" dia.
wattles available.

Earth Saver Wattles vs. Rolled Blanket Products — You Be The Judge

Some manufacturers of rolled blanket systems claim their products are superior to Earth Saver® Rice Straw Wattles. However, rolled blankets are not the functional equivalent of Earth Saver wattles, the only scientifically tested wattle in the industry. Consider the facts:

In field applications, Earth Saver wattles can measure up to twice the effective height of rolled blankets for twice the sediment control. Rolled blankets are thus substantially less effective than rice straw wattles in retaining raw sediment.

Earth Saver wattles hold their shape and are proven to reduce downslope sediment delivery by up to 84 percent. Rolled blankets lack wattle density and flatten easily.

Earth Saver wattles release water at a steady rate, offering superior performance and soil protection. In comparison, rolled blankets retain excess moisture, which can cause soil slippage from super-saturated blankets.

Earth Saver wattles are delivered ready to install on shrink-wrapped pallets and have no hidden labor costs. Rolled blankets require labor-intensive hand assembly in the field.

On the surface, rolled blanket products look like a cheaper alternative for sediment control. But counting on rolled blankets to retain sediment at your job site could cost you thousands of dollars in fines per day* if the product fails. Remember, there is a difference in erosion control. Earth Saver wattles — considered a **Best Management Practice**

*California State Regional Water Control Board — Water Code Section 13308



and the industry leader — are your best investment. **Don't risk massive fines using a cheap, rolled-up imitation of Earth Saver™ Rice Straw Wattles.**

Earth Saver Rice Straw Wattles ... Patented, Tested, Proven.

Call for the facts:
1-866-WATTLES 1-866-928-8537 or visit our website at www.earth-savers.com for more information.



Emerald Member - IECA



PROUD SPONSOR

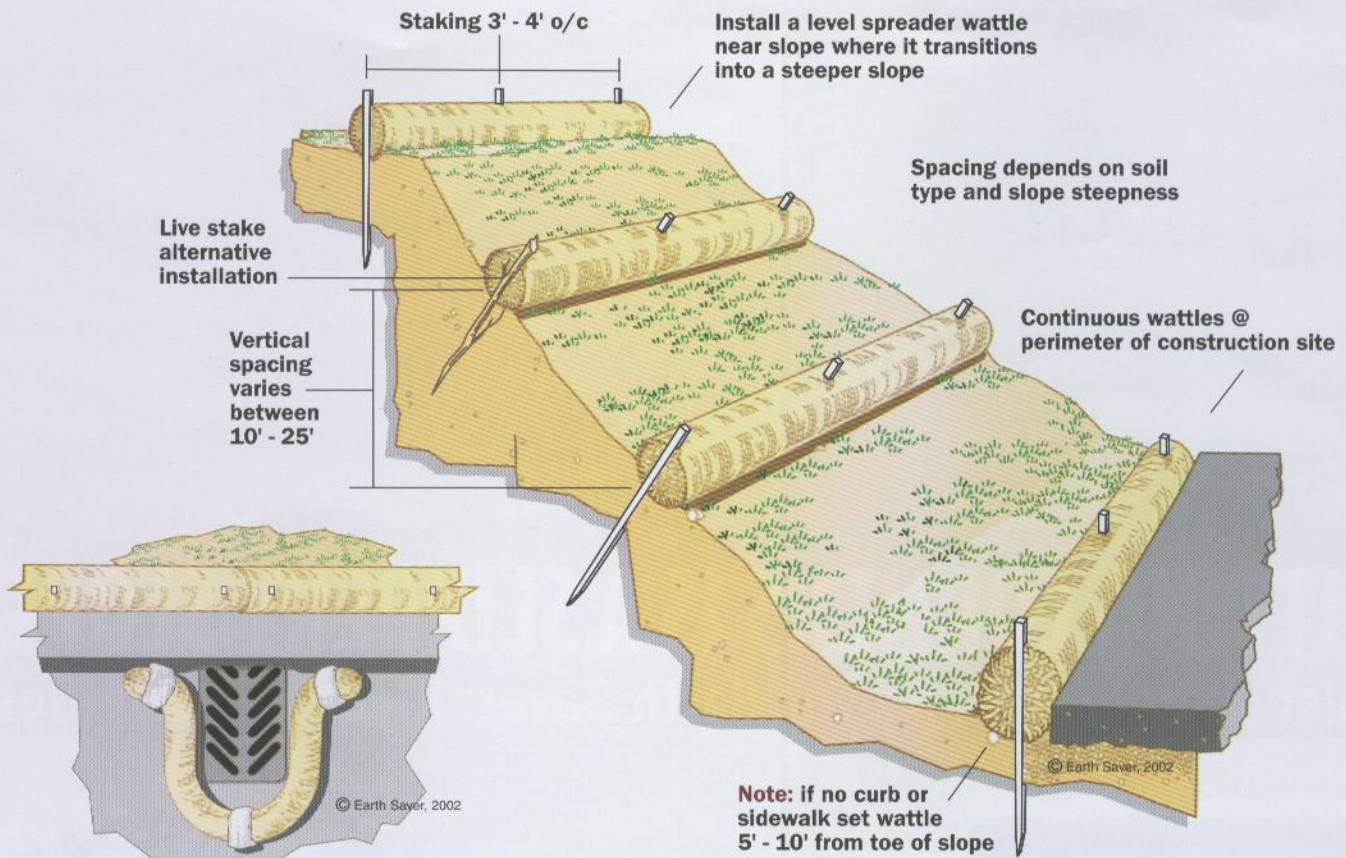
Available Nationwide

DOT and USFS Approved

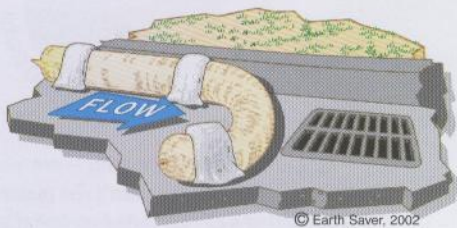
Specifiers

**New - Downloadable
CSI Formatted Product Specifications
& Quality Control Support Forms
Visit www.earth-savers.com**

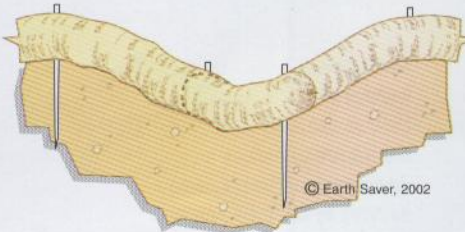
Wattle Installation Diagrams



Paved D. I. Typical



Paved D.I. (Alt. Steep Slope)



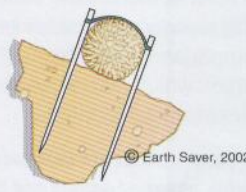
Typical Check Dam Application



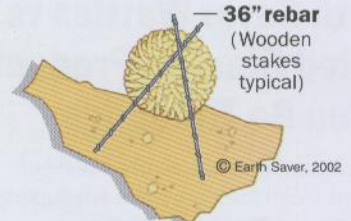
Stock Pile Containment



Typical 9-inch Center Staking



Alt. 9", 12" & 20" No Furrow - Rope Restraint



20-inch Staking



1-866-WATTLES (928-8537)

www.earth-savers.com

Patented, Tested, Proven

R.H. Dyck, Inc. ■ P.O. Box 310 ■ Yolo, CA 95697 ■ Fax: 530-795-3972

