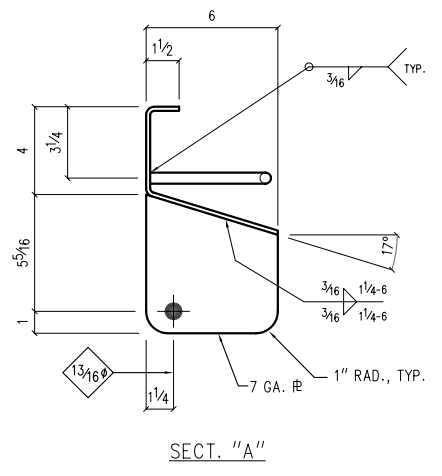


ONE-INLET-THUS-MK-A1

END VIEW



SECT. "A"

3-1-05

REVISION									
NO.	DATE	DESCRIPTION							
1	3-1-05	REVISED TO 10" OPENING.							
PRINT RECORD									
FOR	NO.	DATE	FOR	NO.	DATE	FOR	NO.	DATE	



SHAWNEE STEEL & WELDING INC.

6124 MERRIAM DRIVE
MERRIAM, KANSAS 66203
(913) 432-8046

PROJECT:	
LOCATION:	
ARCHITECT:	
CUSTOMER: OVERLAND PARK	
SUBJECT: CURB INLET FRAME, 10" OPENING	
MATERIAL THIS SHEET: <input checked="" type="checkbox"/> DELIVERED <input type="checkbox"/> ERECTED	FIELD BOLT LIST: N/A
PREP:	MATERIAL SPEC: A36
FINISH: A-123 GALV.	ERECTION DWG. REF: N/A
HOLES 13/16 Ø	DRAWN BY SAM CHECKED BY DET
	JOB NO. DWG. NO.

ANY REPRODUCTION, USE, OR DISCLOSURE OF INFORMATION CONTAINED HEREIN WITHOUT THE PRIOR WRITTEN CONSENT OF SHAWNEE STEEL & WELDING, INC. IS PROHIBITED.

