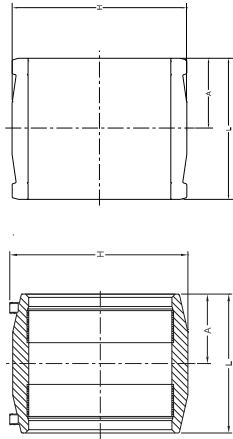


Electrofusion Fittings: Couplings

NOTE: Operating Pressure is 200 psi for PE4710 Couplings in allowable applications.



EF COUPLING DIMENSIONS

Nominal Size	H	L	A
1/2" CTS	2.01	3.15	1.57
1/2" IPS	2.15	2.98	1.42
3/4" CTS	2.15	2.98	1.42
3/4" IPS	2.48	3.46	1.73
1" CTS	2.52	3.46	1.73
1" IPS	2.63	3.46	1.73
1 1/4" CTS	2.56	3.30	1.57
*1 1/4" DUCT (CON.)	3.00	3.70	1.82
1 1/4" IPS	3.04	3.86	1.93
*1 1/4" SIDR 9 (CON.)	3.00	3.70	1.82
1 1/2" IPS	3.36	4.33	2.17
2" IPS	3.78	4.72	2.36
2" CTS	3.59	4.37	2.12
2" IPS	3.82	4.31	2.09
2" IPS CONDUIT	3.55	4.32	2.09
2 1/2" CONDUIT	4.17	4.25	2.06
3" IPS	5.18	5.59	2.72
4" IPS	6.51	6.14	3.00
4" DIPS	6.06	6.93	3.46
5" IPS	7.56	7.17	3.54
6" IPS	8.70	8.35	4.10
6" DIPS	8.74	8.19	4.09
7" IPS	8.93	8.19	4.09
8" IPS	11.20	9.48	4.70
8" DIPS	11.14	10.16	5.00
10" IPS	13.41	10.50	5.00
10" DIPS	13.70	10.90	5.50
12" IPS	15.84	11.50	5.50
12" DIPS	16.20	12.80	6.40

Call for availability of other sizes and dimensions.

* Industrial Non-Compliant ASTM Fittings.

** For Use with Bar-Code Processor Only

4.7R = 4.7 Pin with Resistor

4.7S = 4.7 Solid Pin

Electrofusion Fittings: Couplings

NOTE: Operating Pressure is 200 psi for PE4710 Couplings in allowable applications.

(PE3408/PE4710) ELECTROFUSION COUPLINGS

Size	Description	Pin Type	Part Number	Pack. Qty.	Wt.	AWWA
1/2" CTS	ASTM D2513/F1055	4.7 R	5760019	50	0.09	YES
1/2" CTS	ASTM D2513/F1055	4.7 R	10004578	40	0.10	YES
1" CTS	ASTM D2513/F1055	4.7 R	5760023	25	0.18	YES
1 1/4" CTS	ASTM D2513/F1055	4.7 R	10004573	30	0.16	YES
2" CTS	ASTM D2513/F1055	4.7 S	10004580	30	0.46	-
1/2" IPS	ASTM D2513/F1055	4.7 R	10004627	40	0.13	YES
3/4" IPS	ASTM D2513/F1055	4.7 R	5760022	25	0.29	YES
1" IPS	ASTM D2513/F1055	4.7 R	5760024	25	0.14	YES
1 1/4" IPS	ASTM D2513/F1055	4.7 R	5760026	50	0.28	YES
1 1/2" IPS	ASTM D2513/F1055	4.7 R	5760028	35	0.34	YES
2" IPS	ASTM D2513/F1055	4.7 R	5760030	25	0.38	YES
2 1/2" IPS	CONDUIT PSI=0	3 Pin	call	20	0.55	-
3" IPS	ASTM D2513/F1055	4.7 R	10000358	36	1.57	YES
4" IPS	ASTM D2513/F1055	4.7 R	10000360	10	1.67	YES
6" IPS	ASTM D2513/F1055	4.7 R	10000359	8	4.37	YES
7" IPS	ASTM F1065	4.7 S	10003970	4	7.86	-
8" IPS	ASTM D2513/F1055	4.7 R	10000361	4	8.43	YES
10" IPS	ASTM D2513/F1055	4.7 R	10004579	1	15.40	YES
10" IPS **	ASTM D2513/F1055	4.7 S	10000362	1	15.24	YES
12" IPS	ASTM D2513/F1055	4.7 R	10004571	1	23.10	YES
12" IPS **	ASTM D2513/F1055	4.7 S	10000363	1	23.90	YES
1 1/4" SIDR 7	1.488 OD CONDUIT PSI=0	4.7 R	10004575	40	0.29	-
1 1/4" SIDR 9	1.580 OD CONDUIT PSI=0	4.7 R	10004577	30	0.24	-
4" DIPS	ASTM D2513/F1055	4.7 S	10000353	10	2.34	YES
6" DIPS	ASTM D2513/F1055	4.7 S	10000354	8	4.59	YES
8" DIPS	ASTM D2513/F1055	4.7 S	10000355	4	8.37	YES
10" DIPS	ASTM D2513/F1055	4.7 S	10000356	1	17.43	YES
12" DIPS	ASTM D2513/F1055	4.7 S	10000357	1	25.67	YES

Call for availability of other sizes and dimensions.

** For Use with Bar-Code Processor Only

4.7R = 4.7 Pin with Resistor

4.7S = 4.7 Solid Pin