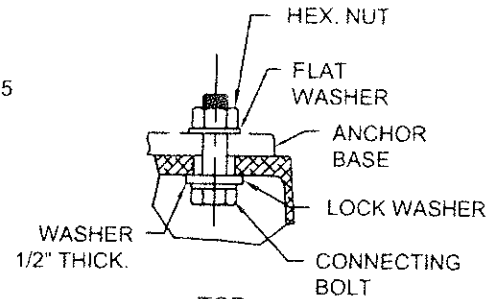


(4) ALUMINUM SHIM

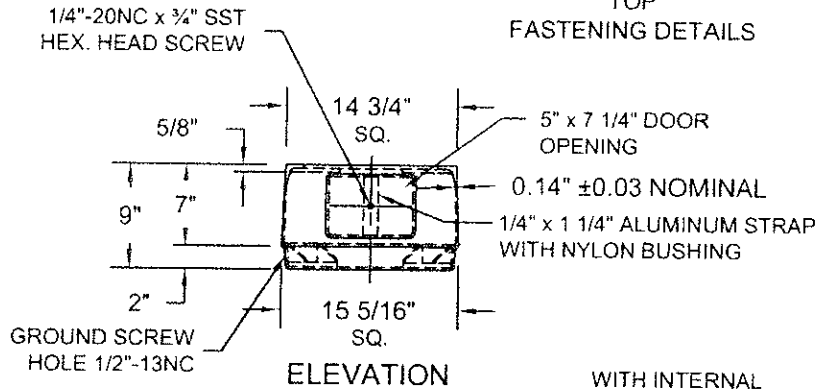
MATERIAL SHALL CONFORM TO ASTM DESIGNATION B108 ALLOY 356-T6
BASE CONFORMS TO BREAKAWAY CRITERIA OF AASHTO STANDARD SPECIFICATIONS FOR STRUCTURAL SUPPORTS FOR HIGHWAY SIGNS, LUMINAIRES AND TRAFFIC SIGNALS (1985) WITHOUT THE USE OF LOCK WASHERS. (THE USE OF LOCK WASHERS BY THE CITY OF OVERLAND PARK VOIDS THIS CONFORMANCE.)

CONNECTING BOLTS

- (4) 1"-8NC x 4" LONG GALV. HEX. HEAD BOLTS SAE GR. 5
- (4) 1" GALV. FLAT WASHERS 2 1/2" O.D.
- (4) 1" GALV. HEX. NUTS
- (4) 1" GALV. LOCK WASHERS

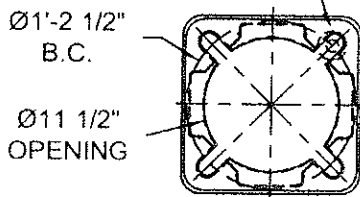


TOP FASTENING DETAILS



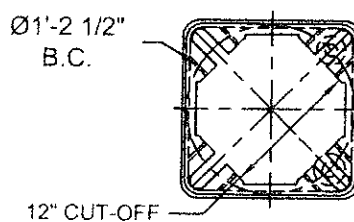
ELEVATION

USE 2 3/4" O.D. x 1 1/16" I.D. x 1/2" THICK. WASHER FOR 1" DIA. CONNECTING BOLTS ON TOP BOLT CIRCLE.



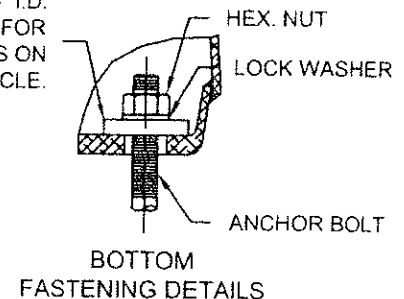
TOP VIEW CS-370

USE 2 3/4" O.D. x 1 1/16" I.D. x 1/2" THICK. WASHER FOR 1" DIA. ANCHOR BOLTS ON BOTTOM BOLT CIRCLE.



BOTTOM VIEW CS-370

WITH INTERNAL CORNER WELDS



BOTTOM FASTENING DETAILS

DO NOT SCALE

valmont 

Structures Division, Valmont Industries, Inc.
20805 Eaton Ave. Farmington,
Minnesota 55024-0228
Phone: (651) 463-8990 (800) 899-7577
Fax: (651) 463-3349

TITLE: N BREAKAWAY BASE CS-370		QTY:	
MODEL NO.:		DWN BY:	
MATERIAL: ALUMINUM ALLOY		R.J.	
FINISH:		CHK'D BY:	
PROJECT: CITY OF OVERLAND PARK, KS		APPR BY:	
SOLD TO:		DATE:	
SHIP TO:		05-14-03	
P.O. NO.:		DWG NO:	
REP: POWER EQUIPMENT		KS-91	
3	Feb 24-14	NO LOGO ON CS-370 BASE DOOR	S.L.
2	10-20-04	LOCK WASHERS ADDED	R.J.
1	10-15-04	BOLT CIRCLES	R.J.
REV	DATE	REVISION DESCRIPTION	BY
			25 / 25

****CONFIDENTIAL****

The information contained in this drawing is privileged and confidential, and may be protected from disclosure. Please be aware that any use or dissemination of this drawing may be subject to legal restriction or sanction.