

valmont

Structures Division, Valmont Industries, Inc.
20805 Eaton Ave. Farmington,
Minnesota 55024-0228
Phone: (651) 463-8990 (800) 899-7577
Fax: (651) 463-3349

****CONFIDENTIAL****

The information contained in this drawing is privileged and confidential, and may be protected from disclosure. Please be aware that any use or dissemination of this drawing may be subject to legal restriction or sanction.

TITLE: N ALUM. LIGHT POLE FOR TWIN TRUSS ARM

MODEL NO.: 32-403XXDT1060/OP403

MATERIAL: ALUMINUM ALLOY

FINISH: SATIN GROUND

PROJECT: CITY OF OVERLAND PARK, KS

SOLD TO:

SHIP TO:

P.O. NO:

REP: POWER EQUIPMENT

03-28-14 AASHTO 2013, 90mph

03-05-10 AASHTO 1994

10-20-06 VIBRATION DAMPER WELDING

REV DATE REVISION DESCRIPTION

QTY:

DWN BY:

R.J.

CHKD BY:

APPR BY:

DATE:

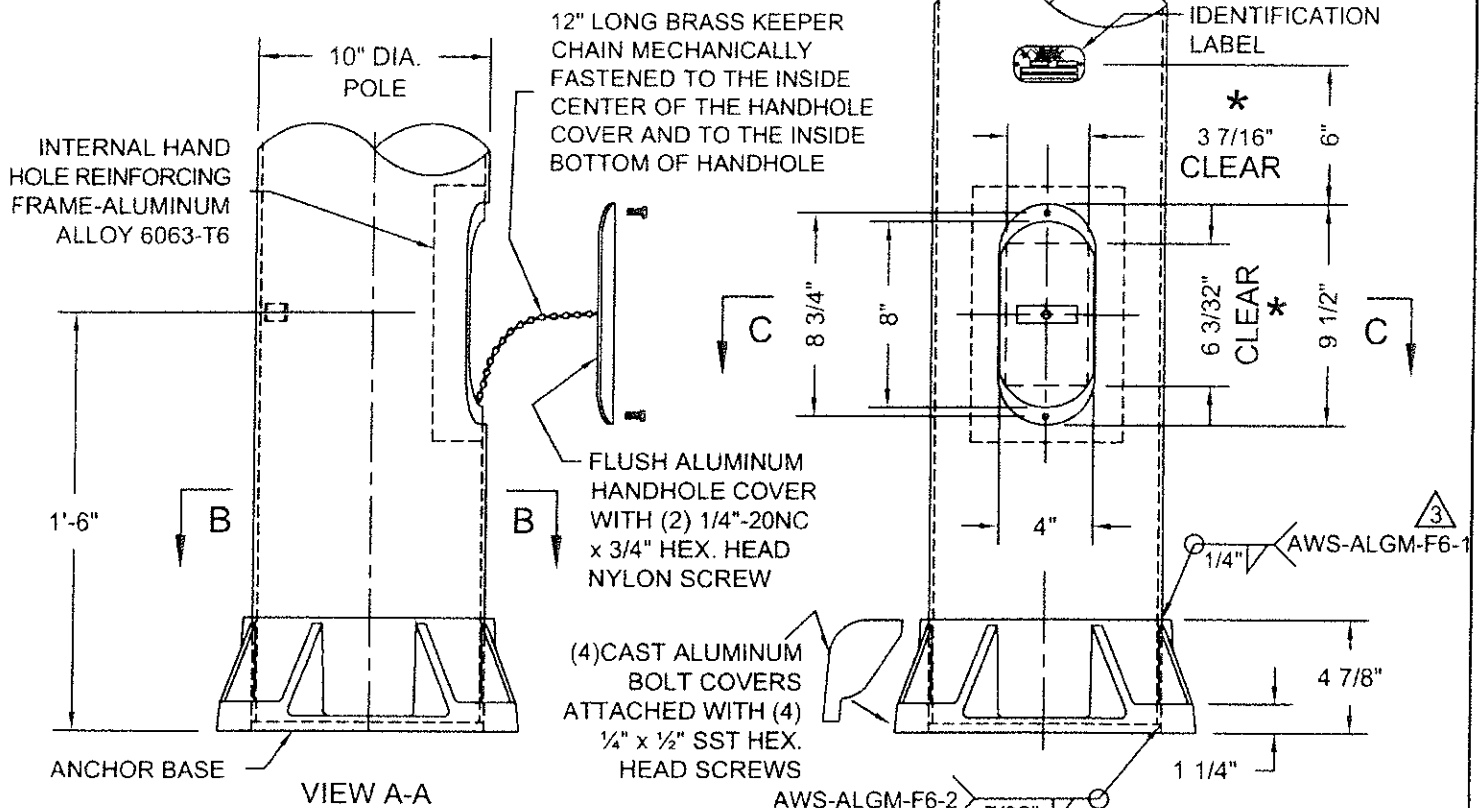
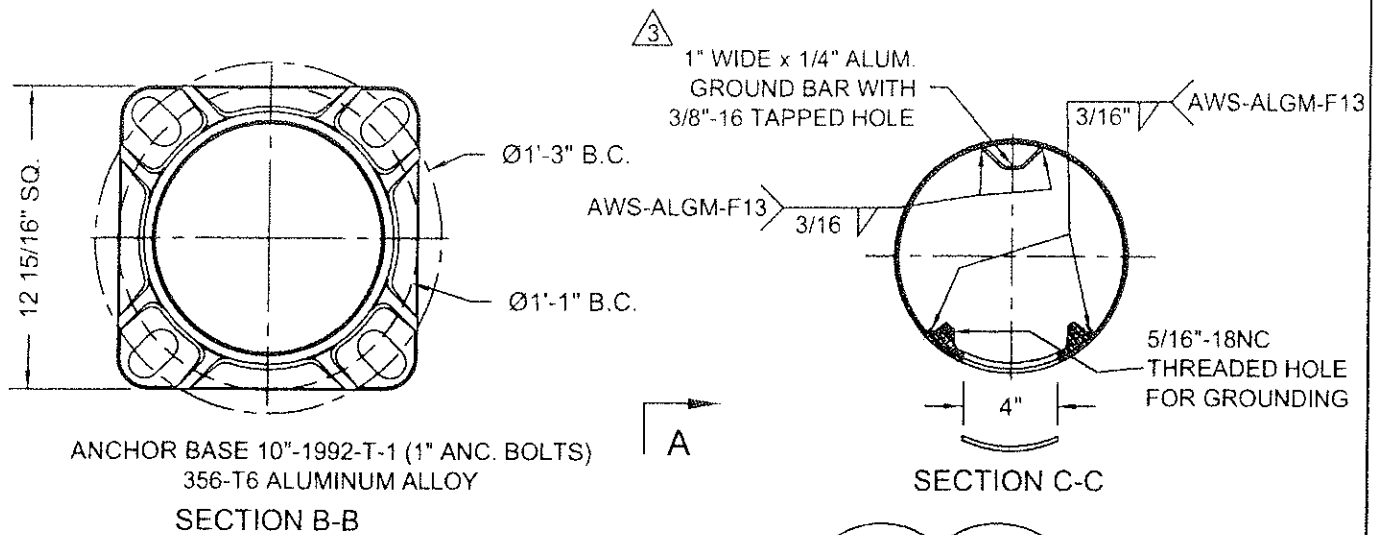
05-14-03

DWG NO:

KS-76

PAGE:

BY 7/25



* NOTE: MUST MAINTAIN A 3 7/16" x 6 3/32" CLEAR OPENING IN HANDHOLE

DO NOT SCALE

valmont 

Structures Division, Valmont Industries, Inc.
20805 Eaton Ave. Farmington,
Minnesota 55024-0228
Phone: (651) 463-8990 (800) 899-7577
Fax: (651) 463-3349

TITLE: N 10" DIA. POLE BASE & 4" x 8" HANDHOLE

MODEL NO.:

MATERIAL: ALUMINUM ALLOY

FINISH: SATIN GROUND

PROJECT: CITY OF OVERLAND PARK, KS

SOLD TO:

SHIP TO:

P.O. NO:

REP: POWER EQUIPMENT

QTY:

DWN BY: R.J.

CHK'D BY:

APPR BY:

DATE: 05-14-03

REV	DATE	REVISION DESCRIPTION	BY
1	03-28-14	REVISED V-GROUND SIZE, WELD PROCEDURE	S.L.
2	10-20-06	WELDING	R.J.
3	08-22-05	GENERAL	R.J.

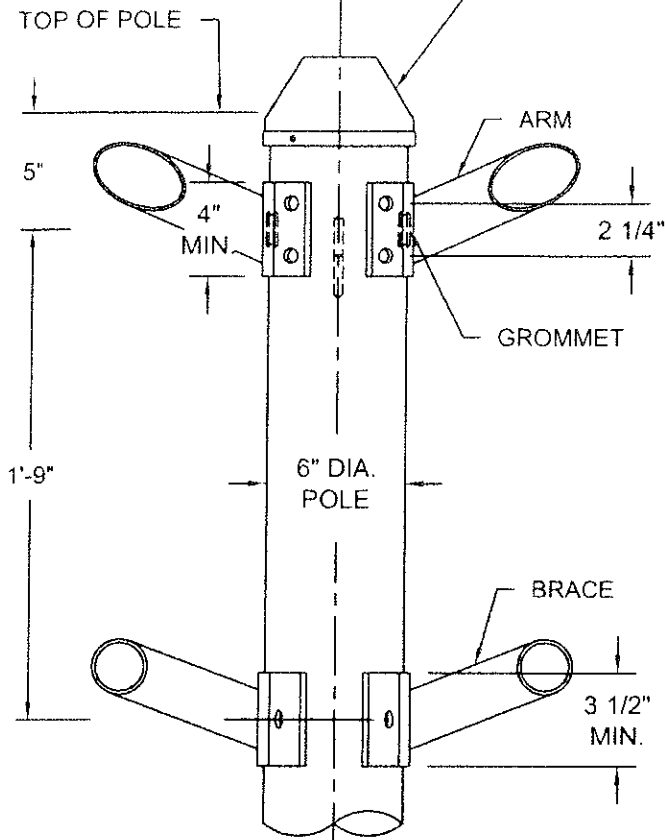
DWG NO: KS-88

PAGE: 21 / 25

****CONFIDENTIAL****

The information contained in this drawing is privileged and confidential, and may be protected from disclosure. Please be aware that any use or dissemination of this drawing may be subject to legal restriction or sanction.

SPUN ALUMINUM POLE CAP WITH
(3) 1/4"-20NC x 1/2" SST HEX.
SOCKET HEADLESS SET SCREWS



TRUSS ARM MOUNTING

**TIGHTENING SEQUENCE
FOR Ø1/2" STAINLESS
STEEL BOLTS.**
- TIGHTEN WITH HAND.
- APPLY 37.50 ft.lbs
- APPLY 47.50 ft.lbs
- APPLY 50.00 ft.lbs

**TIGHTENING SEQUENCE
FOR Ø3/8" STAINLESS
STEEL BOLTS.**
- TIGHTEN WITH HAND.
- APPLY 17.00 ft.lbs
- APPLY 21.50 ft.lbs
- APPLY 22.50 ft.lbs

(8) 1/2" x 2" LONG SST HEX. HEAD BOLTS

(8) 1/2" SST LOCK WASHERS

(8) 1/2" SST FLAT WASHERS

(8) 1/2" RIVNUTS
INSTALLED IN (8)
21/32" DRILLED
HOLES

(8) 1/2" SST FLAT
WASHERS
15'-0" ARM ONLY

(8) 1/2" SST
HEX.NUTS
15'-0" ARM ONLY

DRILL (2) 1 1/4"
DIA. HOLES FOR
1" I.D. GROMMET

EXTRUDED ARM
PLATES ALUM.
ALLOY 6063-T6

103°

SECTION AT ARM ATTACHMENT

(4) 3/8" x 1 3/4" LONG
SST HEX. HEAD BOLTS

(4) 3/8" SST LOCK WASHERS

(4) 3/8" SST FLAT WASHERS

(4) 3/8" RIVNUTS
INSTALLED IN
(4) 1/2" DRILLED
HOLES

EXTRUDED ARM
PLATES ALUM. ALLOY
6063-T6

90°

SECTION AT BRACE ATTACHMENT

DO NOT SCALE

valmont 

Structures Division, Valmont Industries, Inc.
20805 Eaton Ave. Farmington,
Minnesota 55024-0228
Phone: (651) 463-8990 (800) 899-7577
Fax: (651) 463-3349

****CONFIDENTIAL****

The information contained in this drawing is privileged and confidential,
and may be protected from disclosure. Please be aware that any use or
dissemination of this drawing may be subject to legal restriction or sanction.

TITLE: N TYPE B - TRUSS ARM ATTACHMENT - TWIN

MODEL NO.:
MATERIAL: ALUMINUM ALLOY
FINISH: SATIN GROUND
PROJECT: CITY OF OVERLAND PARK, KS
SOLD TO:
SHIP TO:
P.O. NO.:
REP: POWER EQUIPMENT

08-16-10	SINGLE & TWIN SEPARATED	R.J.
11-25-08	LENGTH OF ATTACHMENT PLATES	R.J.
10-20-06	J HOOK WELDING	R.J.

REV	DATE	REVISION DESCRIPTION
-----	------	----------------------

QTY:

DWN BY:

R.J.

CHKD BY:

APPR BY:

DATE:

05-14-03

DWG NO:

KS-84-T

PAGE:

17 25