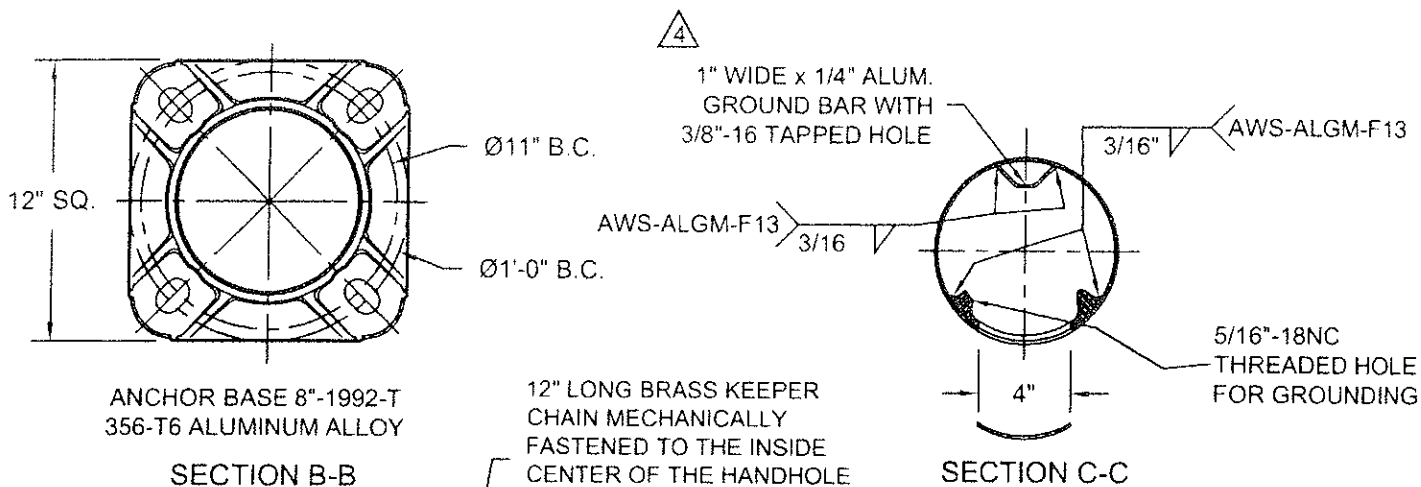


Structures Division, Valmont Industries, Inc.  
20805 Eaton Ave Farmington,  
Minnesota 55024-0228  
Phone: (651) 463-8990 (800) 899-7577  
Fax: (651) 463-3349

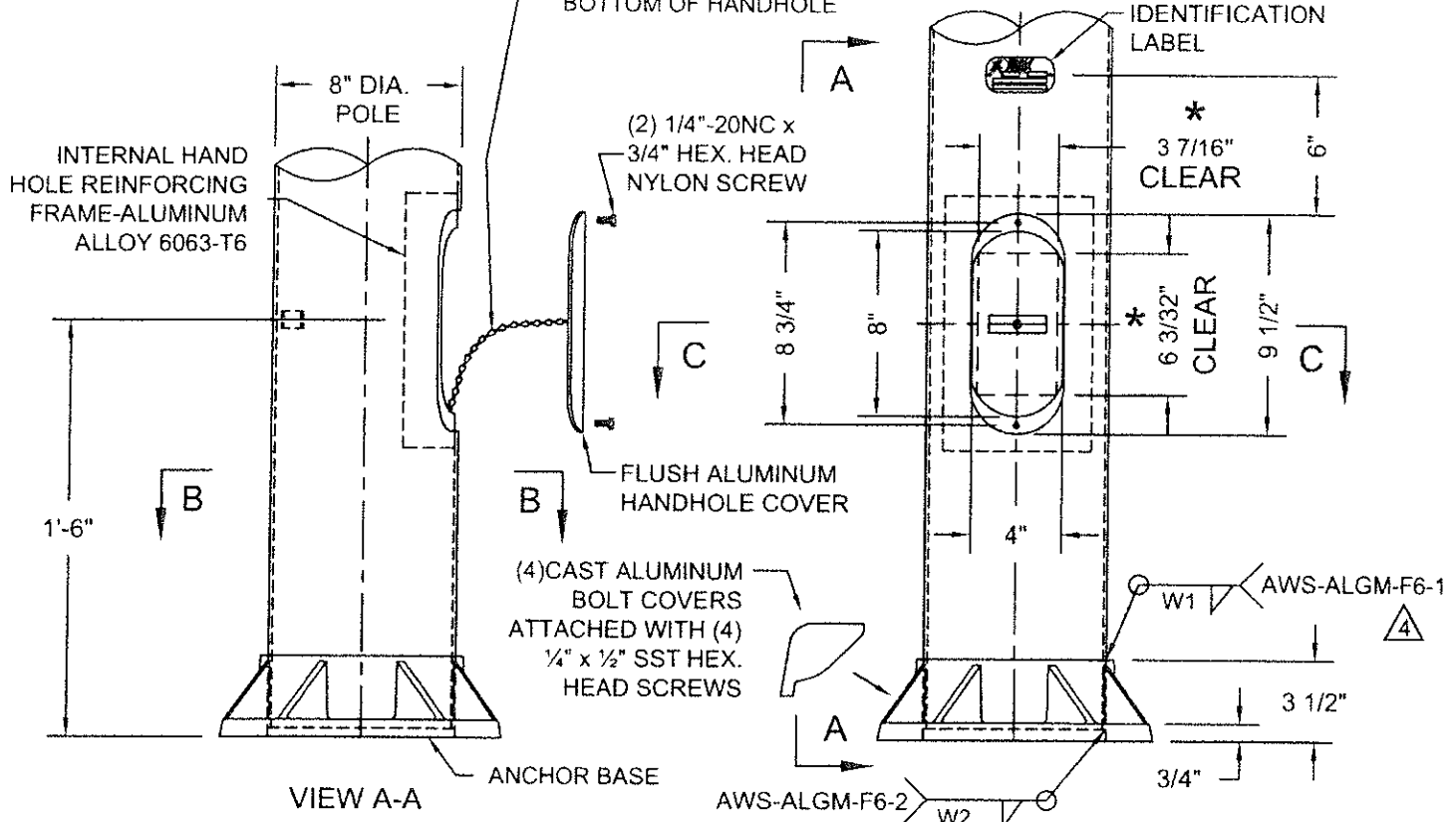
TITLE: N ALUM. LIGHT POLE FOR TRUSS ARM		QTY:
MODEL NO.: 31-403XXDT0860/OP402		DWN BY: R.J.
MATERIAL: ALUMINUM ALLOY		CHK'D BY:
FINISH: SATIN GROUND		APPR BY:
PROJECT: CITY OF OVERLAND PARK, KS		DATE: 05-14-03
SOLD TO:		DWG NO.: KS-75
SHIP TO:		PAGE:
P.O. NO.:		BY
REP: POWER EQUIPMENT		6 / 25
6	03-28-14	AASHTO 2013, 90mph
5	03-05-10	AASHTO 1994
4	10-20-06	VIBRATION DAMPER WELDING
REV	DATE	REVISION DESCRIPTION

**\*\*CONFIDENTIAL\*\***

The information contained in this drawing is privileged and confidential, and may be protected from disclosure. Please be aware that any use or dissemination of this drawing may be subject to legal restriction or sanction.



12" LONG BRASS KEEPER CHAIN MECHANICALLY FASTENED TO THE INSIDE CENTER OF THE HANDHOLE COVER AND TO THE INSIDE BOTTOM OF HANDHOLE



WELDING TABLE		
POLE WALL THICKNESS	W1	W2
0.188"	3/16"	3/16"
0.219"	1/4"	7/32"

\* NOTE: MUST MAINTAIN A 3 7/16" x 6 3/32" CLEAR OPENING IN HANDHOLE

DO NOT SCALE

**valmont**

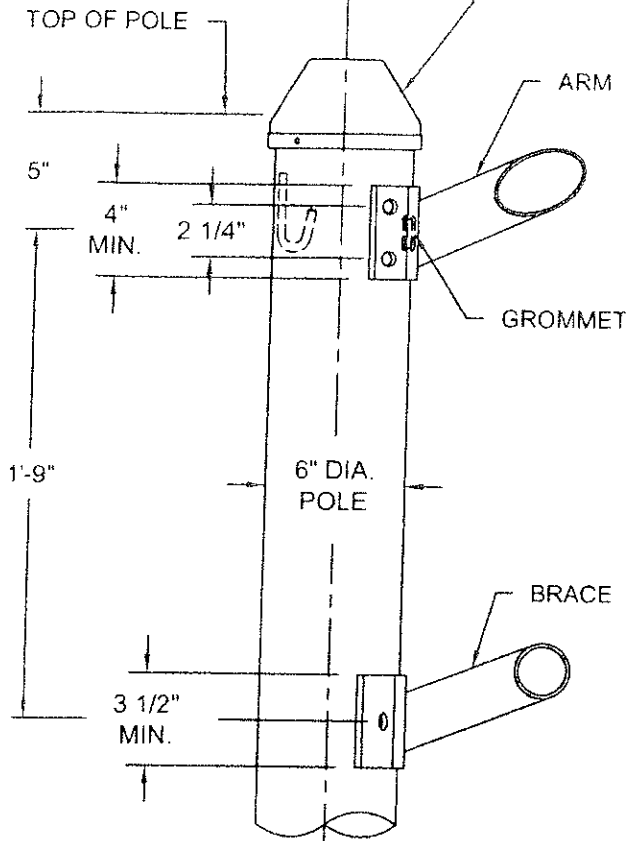
Structures Division, Valmont Industries, Inc.  
20805 Eaton Ave Farmington,  
Minnesota 55024-0228  
Phone: (651) 463-8990 (800) 899-7577  
Fax: (651) 463-3349

TITLE: N 8" DIA. POLE BASE & 4" x 8" HANDHOLE		QTY:
MODEL NO.:		DWN BY: R.J.
MATERIAL: ALUMINUM ALLOY		CHK'D BY:
FINISH: SATIN GROUND		APPR BY:
PROJECT: CITY OF OVERLAND PARK, KS		DATE: 05-14-03
SOLD TO:		DWG NO. KS-87
SHIP TO:		PAGE:
P.O. NO.:		REV
REP: POWER EQUIPMENT		DATE
03-28-14	REV'D V-GROUND, WELD SIZE AND PROCEDURE	S.L.
10-20-06	WELDING	R.J.
08-22-05	GENERAL	R.J.
REV	DATE	REVISION DESCRIPTION
		BY
		20 / 25

\*\*CONFIDENTIAL\*\*

The information contained in this drawing is privileged and confidential, and may be protected from disclosure. Please be aware that any use or dissemination of this drawing may be subject to legal restriction or sanction.

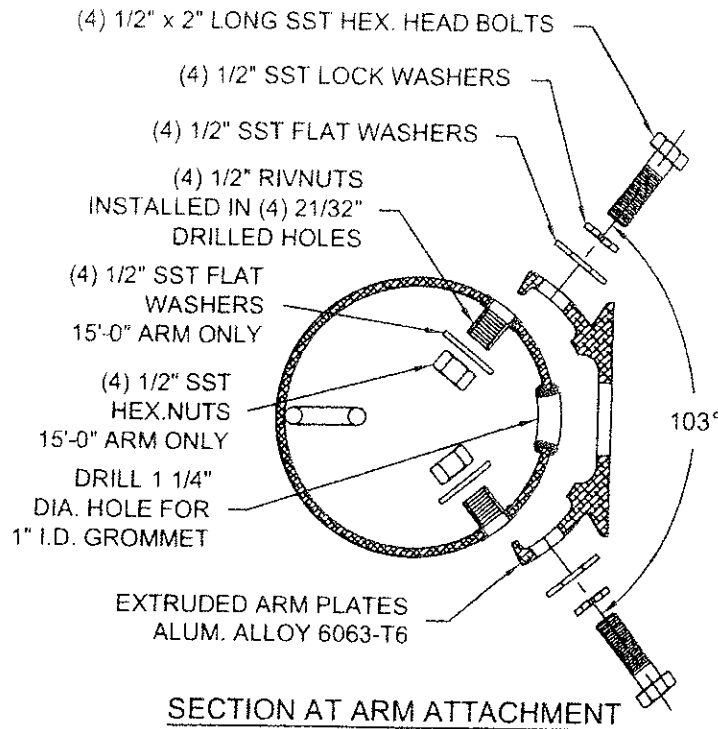
SPUN ALUMINUM POLE CAP WITH  
(3) 1/4"-20NC x 1/2" SST HEX.  
SOCKET HEADLESS SET SCREWS



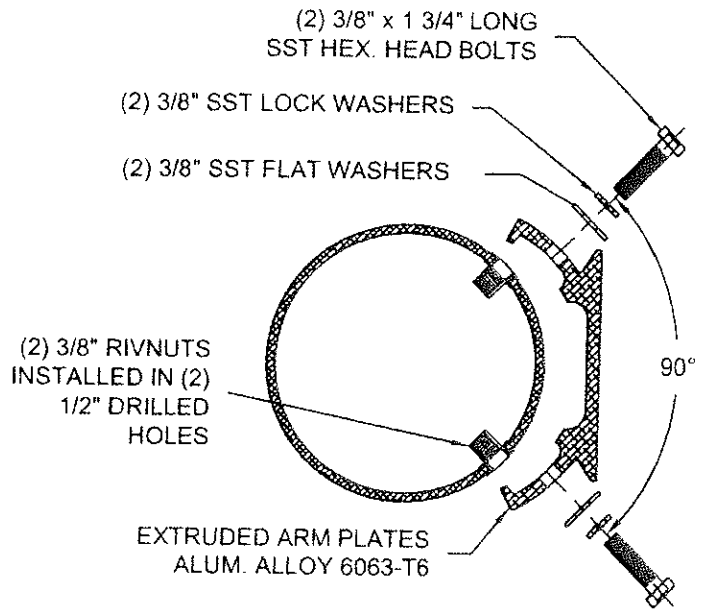
**TRUSS ARM MOUNTING**

**TIGHTENING SEQUENCE FOR Ø1/2" STAINLESS STEEL BOLTS.**  
 - TIGHTEN WITH HAND.  
 - APPLY 37.50 ft.lbs  
 - APPLY 47.50 ft.lbs  
 - APPLY 50.00 ft.lbs

**TIGHTENING SEQUENCE FOR Ø3/8" STAINLESS STEEL BOLTS.**  
 - TIGHTEN WITH HAND.  
 - APPLY 17.00 ft.lbs  
 - APPLY 21.50 ft.lbs  
 - APPLY 22.50 ft.lbs



**SECTION AT ARM ATTACHMENT**



**SECTION AT BRACE ATTACHMENT**

DO NOT SCALE



Structures Division, Valmont Industries, Inc.  
 20805 Eaton Ave. Farmington,  
 Minnesota 55024-0228  
 Phone: (651) 463-8990 (800) 899-7577  
 Fax: (651) 463-3349

TITLE: N TYPE B - TRUSS ARM ATTACHMENT - SINGLE		QTY:
MODEL NO.:		DWTN BY: R.J.
MATERIAL: ALUMINUM ALLOY		CHK'D BY:
FINISH: SATIN GROUND		APPR BY:
PROJECT: CITY OF OVERLAND PARK, KS		DATE: 05-14-03
SOLD TO:		DWG NO. KS-84-S
SHIP TO:		PAGE:
P.O. NO.:		BY 16 / 25
REP: POWER EQUIPMENT		
1	08-16-10 SINGLE & TWIN SEPARATED	R.J.
3	11-25-08 LENGTH OF ATTACHMENT PLATES	R.J.
2	10-20-06 J HOOK WELDING	R.J.
REV	DATE	REVISION DESCRIPTION

**\*\*CONFIDENTIAL\*\***

The information contained in this drawing is privileged and confidential, and may be protected from disclosure. Please be aware that any use or dissemination of this drawing may be subject to legal restriction or sanction.