

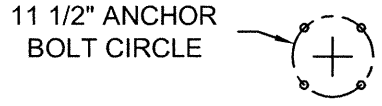
POLE SHALL NOT BE INSTALLED WITHOUT LUMINAIRE

UNITS SHALL BE MANUFACTURED IN ACCORDANCE WITH THE 2013 <sup>△</sup> AASHTO STANDARD SPECIFICATIONS FOR STRUCTURAL SUPPORTS FOR HIGHWAY SIGNS, LUMINAIRES AND TRAFFIC SIGNALS.

3-SEC. GUST WIND SPEED: 90 mph <sup>△</sup>  
 EPA (LUMINAIRE): 1.3 sq.ft  
 WEIGHT (LUMINAIRE): 55 lbs

HANDHOLE MUST BE SMOOTH AND FREE OF BURS

MATERIAL FOR ANCHOR BOLTS:  
 ASTM: F1554 GRADE 55 OR G40.21 GRADE 55W



BOLT CIRCLE FOUNDATION BY OTHERS

TYPE OP401-8-8

DO NOT SCALE

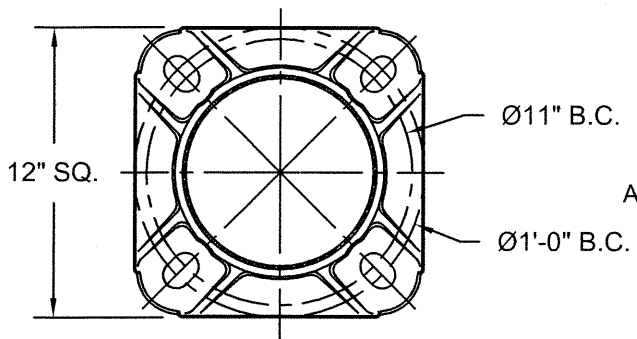
**valmont** 

Structures Division, Valmont Industries, Inc.  
 20805 Eaton Ave Farmington,  
 Minnesota 55024-0228  
 Phone: (651) 463-8990 (800) 899-7577  
 Fax: (651) 463-3349

TITLE: N ALUM. LIGHT POLE FOR TWIN MEMBER ARM	QTY:
MODEL NO.:	DWN BY: SL
MATERIAL: ALUMINUM ALLOY	CHK'D BY:
FINISH: SATIN GROUND	APPR BY:
PROJECT: CITY OF OVERLAND PARK, KS	DATE: July25-14
SOLD TO:	DWG NO: KS-92
SHIP TO:	PAGE:
P.O. NO:	REV DATE REVISION DESCRIPTION BY
REP: POWER EQUIPMENT	26 / 26

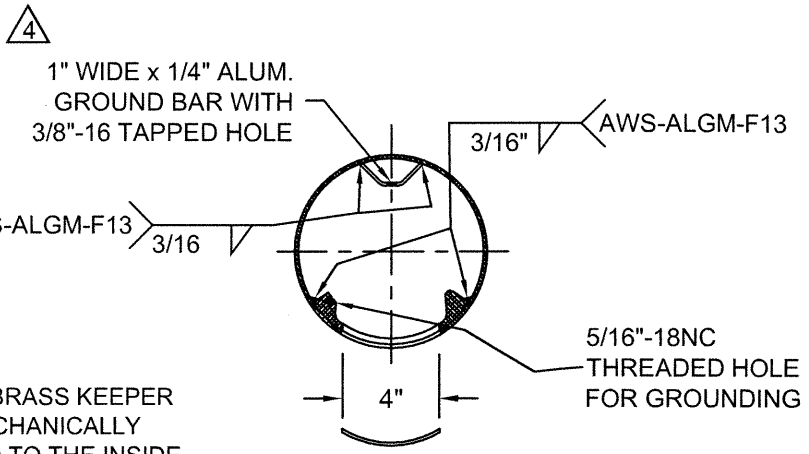
**\*\*CONFIDENTIAL\*\***

The information contained in this drawing is privileged and confidential, and may be protected from disclosure. Please be aware that any use or dissemination of this drawing may be subject to legal restriction or sanction.



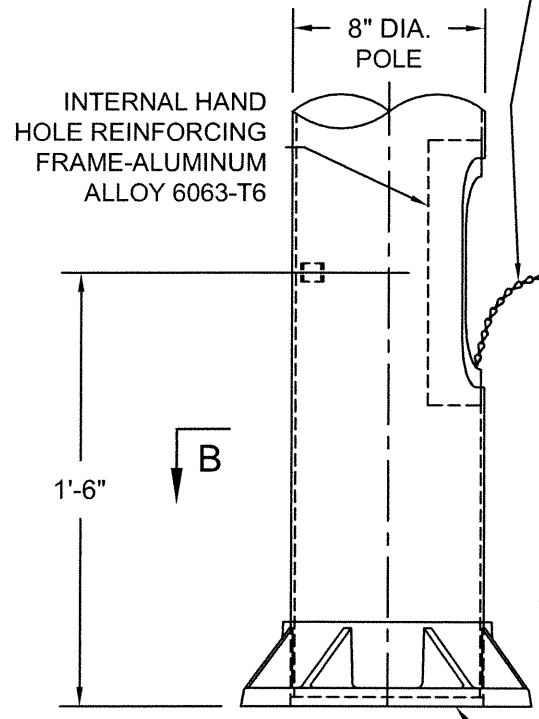
ANCHOR BASE 8"-1992-T  
356-T6 ALUMINUM ALLOY

SECTION B-B

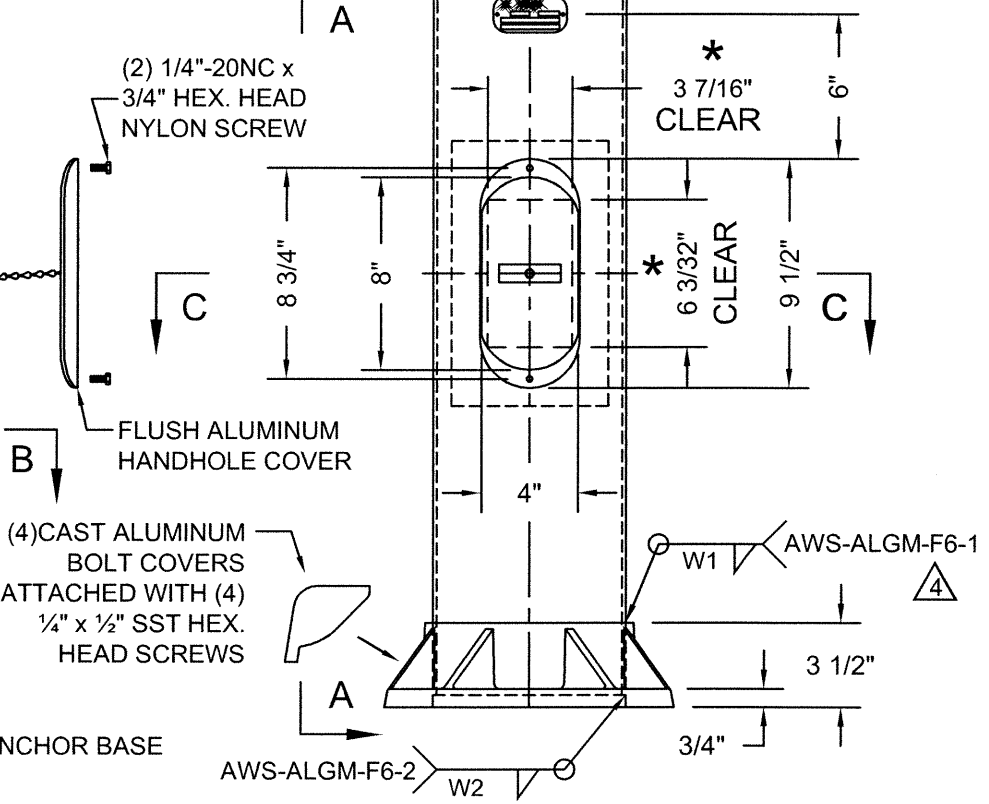


SECTION C-C

12" LONG BRASS KEEPER  
CHAIN MECHANICALLY  
FASTENED TO THE INSIDE  
CENTER OF THE HANDHOLE  
COVER AND TO THE INSIDE  
BOTTOM OF HANDHOLE



VIEW A-A



ELEVATION  
HH COVER OMITTED

\* NOTE: MUST MAINTAIN A  
3 7/16" x 6 3/32" CLEAR  
OPENING IN HANDHOLE

WELDING TABLE		
POLE WALL THICKNESS	W1	W2
0.188"	3/16"	3/16"
0.219"	1/4"	7/32"

DO NOT SCALE



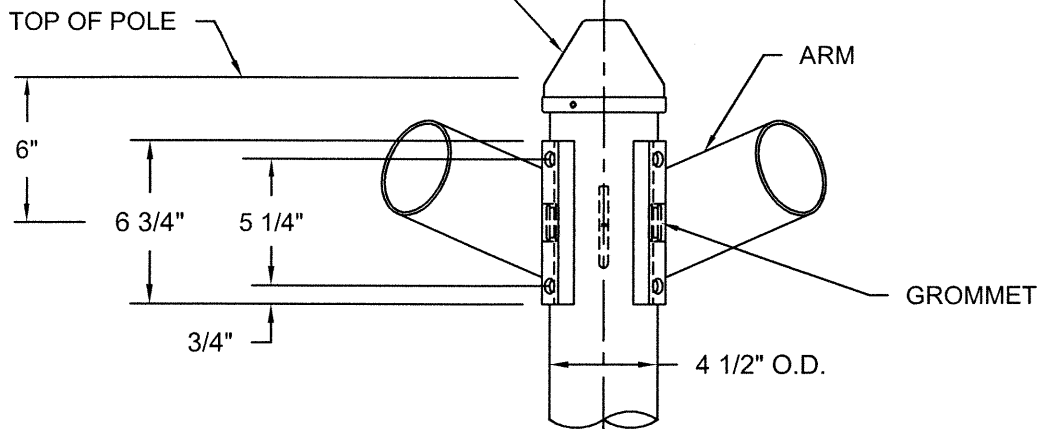
Structures Division, Valmont Industries, Inc.  
20805 Eaton Ave Farmington,  
Minnesota 55024-0228  
Phone: (651) 463-8990 (800) 899-7577  
Fax: (651) 463-3349

TITLE: N 8" DIA. POLE BASE & 4" x 8" HANDHOLE		QTY:	
MODEL NO.:		DWN BY: R.J.	
MATERIAL: ALUMINUM ALLOY		CHK'D BY:	
FINISH: SATIN GROUND		APPR BY:	
PROJECT: CITY OF OVERLAND PARK, KS		DATE: 05-14-03	
SOLD TO:		DWG NO: KS-87	
SHIP TO:		PAGE:	
P.O. NO:		BY: 20 / 26	
REP: POWER EQUIPMENT			
△	03-28-14	REV'D V-GROUND, WELD SIZE AND PROCEDURE	S.L.
△	10-20-06	WELDING	R.J.
△	08-22-05	GENERAL	R.J.
REV	DATE	REVISION DESCRIPTION	BY

\*\*CONFIDENTIAL\*\*

The information contained in this drawing is privileged and confidential, and may be protected from disclosure. Please be aware that any use or dissemination of this drawing may be subject to legal restriction or sanction.

SPUN ALUMINUM POLE CAP WITH  
(3) 1/4"-20NC x 1/2" SST HEX.  
SOCKET HEADLESS SET SCREWS



ARM MOUNTING

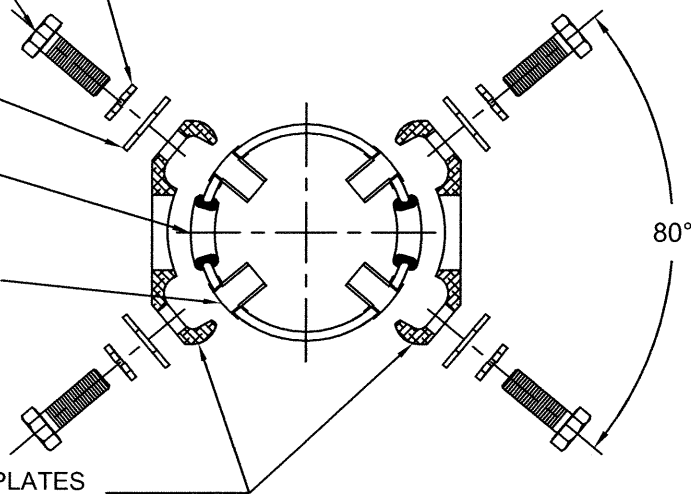
TIGHTENING SEQUENCE  
FOR Ø1/2" STAINLESS  
STEEL BOLTS.  
- TIGHTEN WITH HAND.  
- APPLY 37.50 ft.lbs  
- APPLY 47.50 ft.lbs  
- APPLY 50.00 ft.lbs

(8) 1/2" SST LOCK WASHERS  
(8) 1/2" x 2" LONG SST  
HEX. HEAD BOLTS

(8) 1/2" SST FLAT WASHERS  
DRILL (2) 1 1/4" DIA. HOLES  
FOR 1" I.D. GROMMETS

(8) 1/2" RIVNUTS INSTALLED IN  
(4) 21/32" DRILLED HOLES

EXTRUDED ARM PLATES  
ALUM. ALLOY 6063-T6



TYPICAL SECTION

DO NOT SCALE



Structures Division, Valmont Industries, Inc.  
20805 Eaton Ave Farmington,  
Minnesota 55024-0228  
Phone: (651) 463-8990 (800) 899-7577  
Fax: (651) 463-3349

TITLE: N TYPE A - SINGLE MEMBER ARM ATTACHMENT - TWIN		QTY:	
MODEL NO.:		DWN BY: R.J.	
MATERIAL: ALUMINUM ALLOY		CHK'D BY:	
FINISH: SATIN GROUND		APPR BY:	
PROJECT: CITY OF OVERLAND PARK, KS		DATE: 05-14-03	
SOLD TO:		DWG NO.:	
SHIP TO:		KS-83-T	
P.O. NO.:		PAGE:	
REP: POWER EQUIPMENT		15 / 26	
3	07-13-10	SINGLE & TWIN SEPARATED	R.J.
2	10-20-06	J HOOK WELDING	R.J.
1	10-15-04	J HOOK ADDED	R.J.
REV	DATE	REVISION DESCRIPTION	BY

**\*\*CONFIDENTIAL\*\***

The information contained in this drawing is privileged and confidential, and may be protected from disclosure. Please be aware that any use or dissemination of this drawing may be subject to legal restriction or sanction.