

valmont 

Structures Division, Valmont Industries, Inc.
20805 Eaton Ave. Farmington,
Minnesota 55024-0228
Phone: (651) 463-8990 (800) 899-7577
Fax: (651) 463-3349

TITLE: N ALUM. LIGHT POLE FOR SINGLE MEMBER ARM

MODEL NO.: 21-4030XDT0845/OP401

MATERIAL: ALUMINUM ALLOY

FINISH: SATIN GROUND

PROJECT: CITY OF OVERLAND PARK, KS

SOLD TO:

SHIP TO:

P.O. NO:

REP: POWER EQUIPMENT

QTY:

OWN BY: R.J.

CHK'D BY:

APPR BY:

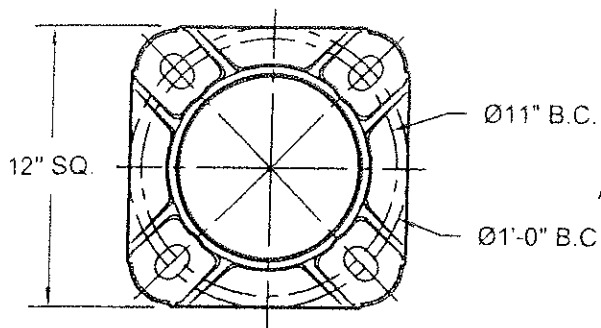
DATE: 05-14-03

REV	DATE	REVISION DESCRIPTION
5	03-28-14	AASHTO 2013, 90mph
4	03-05-10	AASHTO 1994
3	10-20-06	VIBRATION DAMPER WELDING

S.L.	BY	PAGE
R.J.	KS-74	
R.J.		5 / 25

****CONFIDENTIAL****

The information contained in this drawing is privileged and confidential, and may be protected from disclosure. Please be aware that any use or dissemination of this drawing may be subject to legal restriction or sanction.



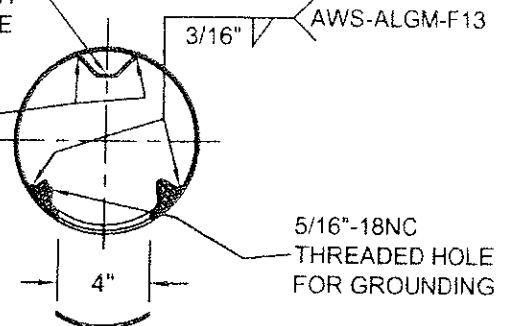
ANCHOR BASE 8"-1992-T
356-T6 ALUMINUM ALLOY

SECTION B-B

4

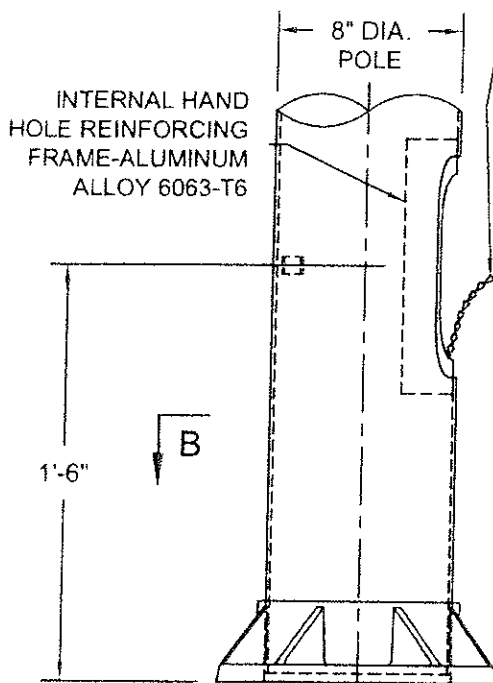
1" WIDE x 1/4" ALUM.
GROUND BAR WITH
3/8"-16 TAPPED HOLE

AWS-ALGM-F13



SECTION C-C

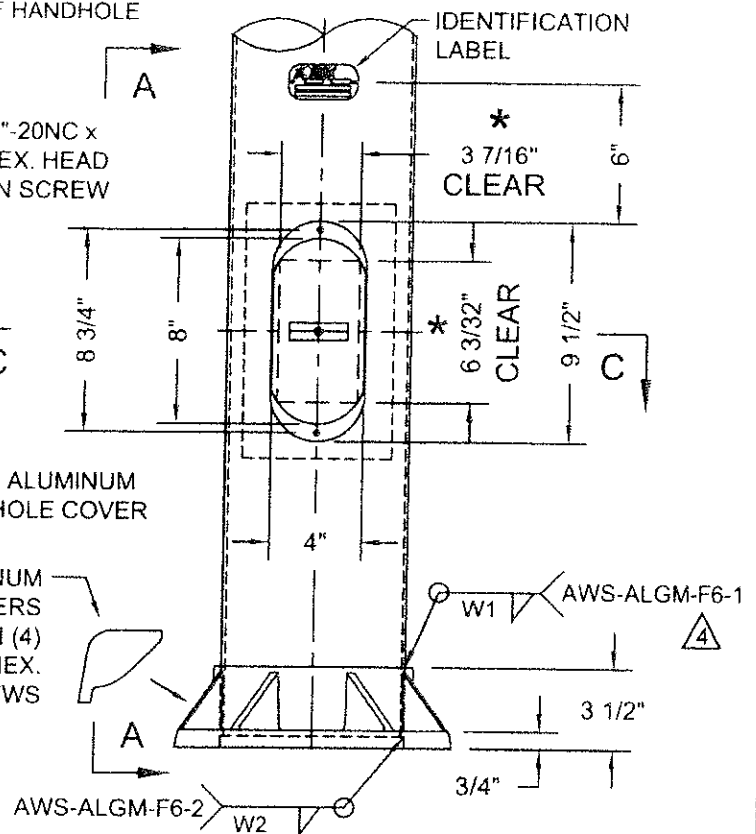
12" LONG BRASS KEEPER
CHAIN MECHANICALLY
FASTENED TO THE INSIDE
CENTER OF THE HANDHOLE
COVER AND TO THE INSIDE
BOTTOM OF HANDHOLE



VIEW A-A

(4) CAST ALUMINUM
BOLT COVERS
ATTACHED WITH (4)
1/4" x 1/2" SST HEX.
HEAD SCREWS

ANCHOR BASE



ELEVATION
HH COVER OMITTED

WELDING TABLE		
POLE WALL THICKNESS	W1	W2
0.188"	3/16"	3/16"
0.219"	1/4"	7/32"

* NOTE: MUST MAINTAIN A
3 7/16" x 6 3/32" CLEAR
OPENING IN HANDHOLE

DO NOT SCALE

valmont

Structures Division, Valmont Industries, Inc.
20805 Eaton Ave. Farmington,
Minnesota 55024-0228
Phone: (651) 463-8990 (800) 899-7577
Fax: (651) 463-3349

TITLE: 8" DIA. POLE BASE & 4" x 8" HANDHOLE

MODEL NO.:
MATERIAL: ALUMINUM ALLOY
FINISH: SATIN GROUND
PROJECT: CITY OF OVERLAND PARK, KS
SOLD TO:
SHIP TO:
P.O. NO.:
REP: POWER EQUIPMENT

QTY:
OWN BY: R.J.
CHK'D BY:
APPR BY:
DATE: 05-14-03

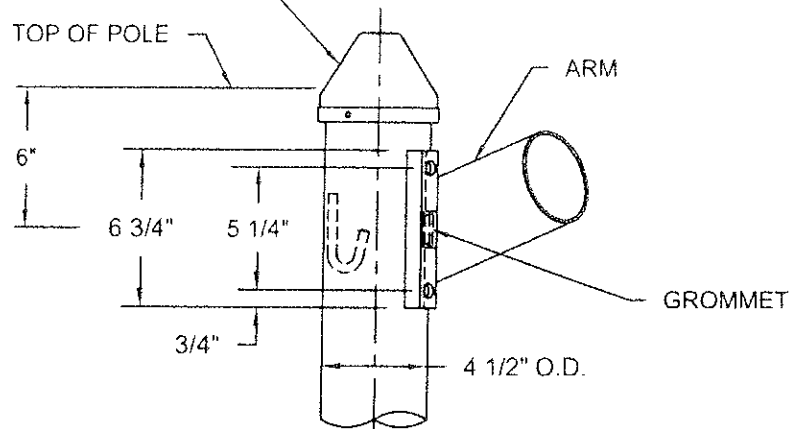
REV	DATE	REVISION DESCRIPTION	BY
1	03-26-14	REV'D V-GROUND, WELD SIZE AND PROCEDURE	S.L.
2	10-20-06	WELDING	R.J.
3	06-22-05	GENERAL	R.J.

DWG NO.: KS-87
PAGE: 20 / 25

****CONFIDENTIAL****

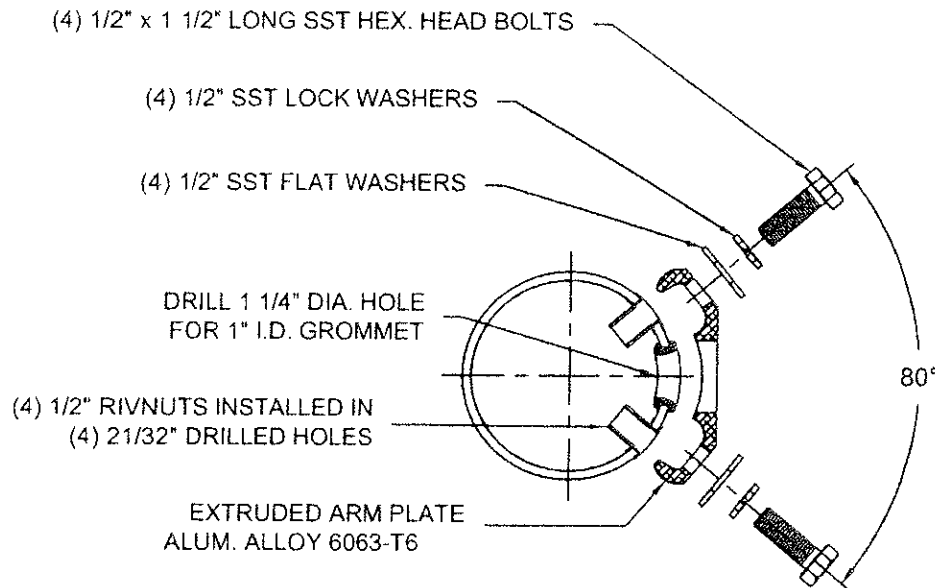
The information contained in this drawing is privileged and confidential,
and may be protected from disclosure. Please be aware that any use or
dissemination of this drawing may be subject to legal restriction or sanction.

SPUN ALUMINUM POLE CAP WITH
(3) 1/4"-20NC x 1/2" SST HEX.
SOCKET HEADLESS SET SCREWS



ARM MOUNTING

TIGHTENING SEQUENCE
FOR Ø1/2" STAINLESS
STEEL BOLTS.
- TIGHTEN WITH HAND.
- APPLY 37.50 ft.lbs
- APPLY 47.50 ft.lbs
- APPLY 50.00 ft.lbs



TYPICAL SECTION

DO NOT SCALE

valmont 

Structures Division, Valmont Industries, Inc.
20805 Eaton Ave Farmington,
Minnesota 55024-0228
Phone: (651) 463-8990 (800) 899-7577
Fax: (651) 463-3349

TITLE: N TYPE A - SINGLE MEMBER ARM ATTACHMENT - SINGLE
MODEL NO.:
MATERIAL: ALUMINUM ALLOY
FINISH: SATIN GROUND
PROJECT: CITY OF OVERLAND PARK, KS
SOLD TO:
SHIP TO:
P.O. NO.:
REP: POWER EQUIPMENT

QTY:
OWN BY:
R.J.
CHK'D BY:
APPR BY:
DATE:
05-14-03

REV	DATE	REVISION DESCRIPTION	BY
1	07-13-10	SINGLE & TWIN SEPARATED	R.J.
2	10-20-06	J HOOK WELDING	R.J.
3	10-15-04	J HOOK ADDED	R.J.

DWG NO:
KS-83-S
PAGE:
14 / 25

****CONFIDENTIAL****

The information contained in this drawing is privileged and confidential,
and may be protected from disclosure. Please be aware that any use or
dissemination of this drawing may be subject to legal restriction or sanction.