

# 2436

## OLDCASTLE POLYMER

(formerly H-Series)

### COVER

- Style: Flush Solid  
 Material: Polymer Concrete  
 Model: 24" x 36"  
 Weight: Tier 15: 150 lbs.  
 Tier 22: 204 lbs.  
 Std. Fasteners: 1/2-13 Stainless Steel Hex Head Bolt, Washer and Floating Nut  
 Options: Logos and Special Markings  
 Surface: Slip Resistant  
 Performance: ANSI/SCTE-77, Tier 15 or Tier 22\*

Cover comes standard with permanent markings for manufacturer, load rating, model size and manufacturing location.

### BODY

- Material: Polymer Concrete  
 Model: 24" x 36"  
 Weight: 18" Depth: 142 lbs.  
 24" Depth: 175 lbs.  
 36" Depth: 242 lbs.  
 Wall Type: Straight  
 Performance: ANSI/SCTE-77 Tier 22

### LOAD RATING / NOTES

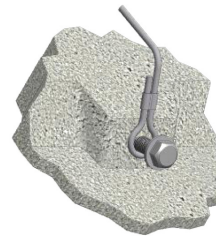
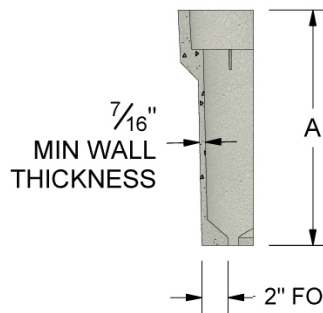
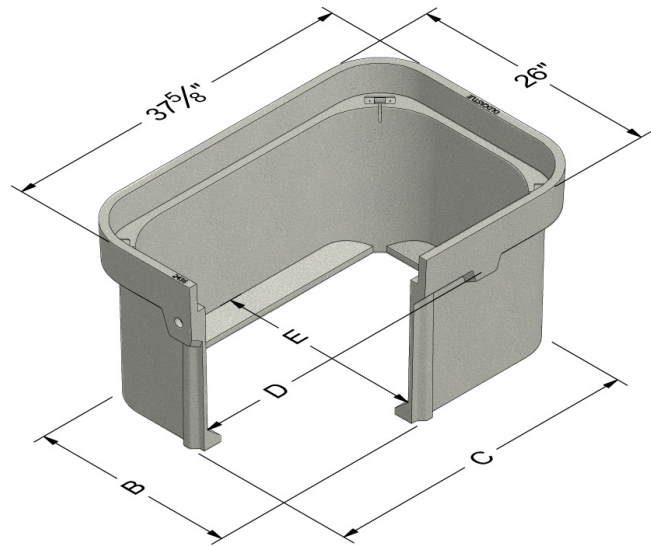
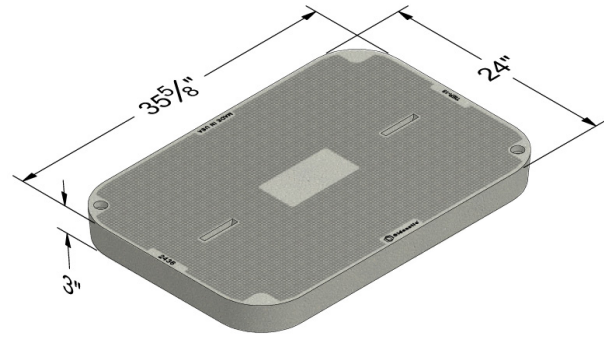


MEDIUM DUTY  
ANSI/SCTE TIER 15

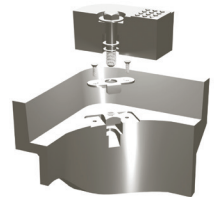


HEAVY DUTY  
ANSI/SCTE TIER 22

For use in non-vehicular traffic situations only.  
 Weights and dimensions may vary slightly.  
 Actual load rating is determined by the box and cover combination.



Lifting Strap Detail



Bolt Down Detail

	A	B	C	D	E
2436-18	18	23-5/8	35-1/4	33-3/15	21-9/16
2436-24	24	23-3/8	34-15/16	32-13/16	21-5/16
2436-30	30	23-1/2	35-1/8	32-3/4	21-1/8
2436-36	36	23-3/16	34-11/16	32-7/16	20-15/16

\* Based upon lid and body combination, this unit can be Tier 15 or Tier 22. T22 rating when paired with T22 polymer concrete lid.

# 2436

## OLDCASTLE POLYMER

(formerly H-Series)

### COVER OPTIONS

#### Oldcastle Polymer, Flush Solid

Oldcastle Polymer, Flush 2-Piece

Oldcastle Polymer, Flush Pedestal Provision

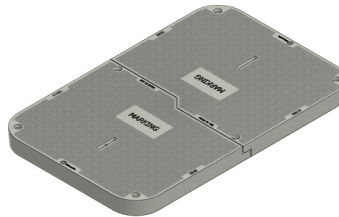
Steel, Solid



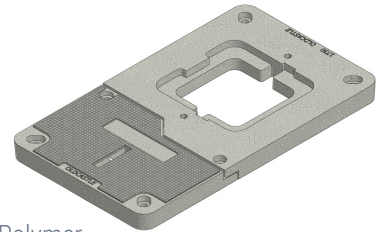
Polymer  
Solid



Steel  
Solid



Polymer  
2-Piece



Polymer  
Pedestal Provision

### FASTENER OPTIONS

#### Hex Head Bolt (A)

Penta Head Bolt (B)

Penta Head Coil Thread Bolt (B)

Oldcastle Vandal Resistant Bolt (C)

Captive Bolt Retainer



Standard Thread



A



B



C



Coil Thread



Bolt Retainer  
(for standard thread)

### ADD ON OPTIONS

EMS Marker

Mouseholes/Knockouts

Rack Mount

Cable Racks/Cable Arms

Unistrut

Pulling Eye - 1,000 lb and 3,000 lb

Ground Buss

Dividers

Racking Provision

Lid Gaskets\*

Solid Bottom

Custom Marking Plate (Polymer)



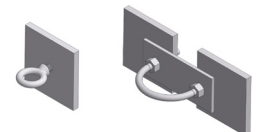
Rack Mount



Cable Rack  
Cable Arm



Unistrut



Pulling Eye



EMS Marker



Ground Bus

\* Lid Gaskets inhibit water flow into the box, they do not make enclosure fully waterproof.

**WARNING:** Cancer - [www.P65Warnings.ca.gov](http://www.P65Warnings.ca.gov)

All information contained on this sheet is current at the time of publication.  
Oldcastle reserves the right to discontinue or update product information without notice.

Revision 11/09/18  
© 2018 Oldcastle Infrastructure

## OLDCASTLE POLYMER 2424 Continued

RATING	PART #	DESC 1	DESC 2	COLOR	DEPTH	ITEM WEIGHT	PALLET QTY	DESIGN LOAD (LB)	QUICK SHIP
T22	24241623	Unit, PC2424-36, T22 - "Electric"	PC242436-T22	Gray	36"	273.0	1	22500	
T22	24241624	Unit, PC2424-36, T22 - "FIBER OPTICS"	PC242436-T22_457	Gray	36"	273.0	1	22500	
T22	24241625	Unit, PC2424-36, T22 - "Street Lighting"	PC242436-T22	Gray	36"	273.0	1	22500	
T22	24241626	Unit, PC2424-36, T22 - "Traffic Signal"	PC242436-T22	Gray	36"	273.0	1	22500	
T22	24241627	Unit, PC2424-36, T22 - Blank	PC242436-T22	Gray	36"	273.0	1	22500	
T22	24241471	Unit, PC2424-36 T22 HBlT WAX, 'MRKNG PLT REQ'	PC242436-T22_999	Gray	36"	273.0	1	22500	

## OLDCASTLE POLYMER 2436

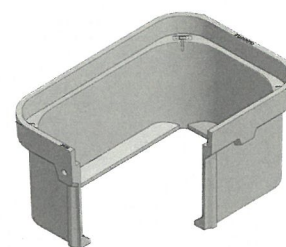
Polymer Concrete - 24" x 36" (formerly H-Series)



MEDIUM DUTY  
ANSI/SCTE TIER 15



HEAVY DUTY  
ANSI/SCTE TIER 22



RATING	PART #	DESC 1	DESC 2	COLOR	DEPTH	ITEM WEIGHT	PALLET QTY	DESIGN LOAD (LB)	QUICK SHIP
<b>Body - 2436</b>									
T22	24362016	Body, PC2436-18, SW	PC243618SW	Gray	18"	142.0	3	22500	
T22	24362214	Body, PC2436-24, SW	PC243624SW	Gray	24"	180.0	2	22500	
T22	24362212	Body, PC2436-30, SW	PC243630SW	Gray	30"	221.0	2	22500	
T22	24362227	Body, PC2436-36, SW	PC243636SW	Gray	36"	249.0	1	22500	
<b>Lid - 2436</b>									
T15	24364604	Lid, PC2436-T, T15 - Blank	PC2436T-T15	Gray	-	147.0	10	15000	
T15	24364608	Lid, PC2436-T, T15 - "Electric"	PC2436T-T15	Gray	-	147.0	10	15000	
T15	24364609	Lid, PC2436-T, T15 - "FIBER OPTICS"	PC2436T-T15_457	Gray	-	147.0	10	15000	
T15	24364610	Lid, PC2436-T, T15 - "Ground"	PC2436T-T15	Gray	-	147.0	10	15000	
T15	24364611	Lid, PC2436-T, T15 - "Street Lighting"	PC2436T-T15	Gray	-	147.0	10	15000	
T15	24364613	Lid, PC2436-T, T15 - "Traffic Signal"	PC2436T-T15	Gray	-	147.0	10	15000	
T15	24364694	Lid, PC2436-T, T15 - SPECIAL w/MARKING PLATE	PC2436T-T15_999	Gray	-	147.0	10	15000	
T22	24364008	Lid, PC2436-T, T22 - "Electric"	PC2436T-T22	Gray	-	147.0	10	22500	
T22	24364010	Lid, PC2436-T, T22 - Blank	PC2436T-T22	Gray	-	147.0	10	22500	
T22	24364015	Lid, PC2436-T, T22 - "FIBER OPTICS"	PC2436T-T22_457	Gray	-	147.0	10	22500	
T22	24364017	Lid, PC2436-T, T22 - "Street Lighting"	PC2436T-T22	Gray	-	147.0	10	22500	
T22	24364019	Lid, PC2436-T, T22 - "Traffic Signal"	PC2436T-T22	Gray	-	147.0	10	22500	
T22	24364614	Lid, PC2436-T, T22 - "Ground"	PC2436T-T22	Gray	-	147.0	10	22500	
T22	24364615	Lid, PC2436-T, T22 - 4x8 MRKNG PLT REQ	PC2436T-T22	Gray	-	147.0	10	22500	
<b>Unit - 2436 (Units come standard with Body-Open Bottom, Lid, and SS Hex Bolt Floating Nut Hardware)</b>									
T15	24361600	Unit, PC2436-18, T15 - Blank	PC243618-T15	Gray	18"	295.0	3	15000	
T15	24361603	Unit, PC2436-18, T15 - "Electric"	PC243618-T15	Gray	18"	295.0	3	15000	
T15	24361604	Unit, PC2436-18, T15 - "FIBER OPTICS"	PC243618-T15_457	Gray	18"	295.0	3	15000	
T15	24361605	Unit, PC2436-18, T15 - "Street Lighting"	PC243618-T15	Gray	18"	295.0	3	15000	
T15	24361606	Unit, PC2436-18, T15 - "Traffic Signal"	PC243618-T15	Gray	18"	295.0	3	15000	
T15	24361455	Unit, PC2436-18/SYN2436 T15 HBlT WAX, 'MKNG PLT REQ'	PC243618-T15	Gray	18"	295.0	3	15000	
T15	24361610	Unit, PC2436-24, T15 - Blank	PC243624-T15	Gray	24"	330.0	2	15000	
T15	24361613	Unit, PC2436-24, T15 - "Electric"	PC243624-T15	Gray	24"	330.0	2	15000	
T15	24361614	Unit, PC2436-24, T15 - "FIBER OPTICS"	PC243624-T15_457	Gray	24"	330.0	2	15000	
T15	24361615	Unit, PC2436-24, T15 - "Street Lighting"	PC243624-T15	Gray	24"	330.0	2	15000	
T15	24361616	Unit, PC2436-24, T15 - "Traffic Signal"	PC243624-T15	Gray	24"	330.0	2	15000	
T15	24361460	Unit, PC2436-24/SYN2436 T15 HBlT WAX, 'MKNG PLT REQ'	PC243624-T15	Gray	24"	330.0	2	15000	
T15	24361619	Unit, PC2436-30, T15 - Blank	PC243630-T15	Gray	30"	371.0	2	15000	
T15	24361622	Unit, PC2436-30, T15 - "Electric"	PC243630-T15	Gray	30"	371.0	2	15000	
T15	24361624	Unit, PC2436-30, T15 - "Street Lighting"	PC243630-T15	Gray	30"	371.0	2	15000	
T15	24361625	Unit, PC2436-30, T15 - "Traffic Signal"	PC243630-T15	Gray	30"	371.0	2	15000	
T15	24361630	Unit, PC2436-36, T15 - Blank	PC243636-T15	Gray	36"	399.0	1	15000	
T15	24361633	Unit, PC2436-36, T15 - "Electric"	PC243636-T15	Gray	36"	399.0	1	15000	

CONTINUED ON NEXT PAGE

Products are rated by the lowest component rating.  
Tier 15 cover with a tier 22 body is rated tier 15.  
Tier 22 cover with a tier 22 body is rated tier 22.



## OLDCASTLE POLYMER 2436 Continued

RATING	PART #	DESC 1	DESC 2	COLOR	DEPTH	ITEM WEIGHT	PALLET QTY	DESIGN LOAD (LB)	QUICK SHIP
T15	24361633	Unit, PC2436-36, T15 -"Electric"	PC243636-T15	Gray	36"	399.0	1	15000	
T15	24361634	Unit, PC2436-36, T15_"FIBER OPTICS"	PC243636-T15_457	Gray	36"	399.0	1	15000	
T15	24361635	Unit, PC2436-36, T15 -"Street Lighting"	PC243636-T15	Gray	36"	399.0	1	15000	
T15	24361636	Unit, PC2436-36, T15 -"Traffic Signal"	PC243636-T15	Gray	36"	399.0	1	15000	
T15	24361470	Unit, PC2436-36/SYN2436 T15 HBlT WAX_"MKNG PLT REQ"	PC243636-T15	Gray	36"	399.0	1	15000	
T22	24361025	Unit, PC2436-18, T22 - "Electric"	PC243618-T22	Gray	18"	345.0	3	22500	
T22	24361027	Unit, PC2436-18, T22 - Blank	PC243618-T22	Gray	18"	345.0	3	22500	
T22	24361607	Unit, PC2436-18, T22_"FIBER OPTICS"	PC243618-T22_457	Gray	18"	345.0	3	22500	
T22	24361608	Unit, PC2436-18, T22 - "Street Lighting"	PC243618-T22	Gray	18"	345.0	3	22500	
T22	24361609	Unit, PC2436-18, T22 - "Traffic Signal"	PC243618-T22	Gray	18"	345.0	3	22500	
T22	24361456	Unit, PC2436-18 T22 HBlT WAX_"MRKNG PLT REQ"	PC243618-T22_999	Gray	18"	345.0	3	22500	
T22	24361028	Unit, PC2436-24, T22 - "Electric"	PC243624-T22	Gray	24"	380.0	2	22500	
T22	24361030	Unit, PC2436-24, T22 - Blank	PC243624-T22	Gray	24"	380.0	2	22500	
T22	24361206	Unit, PC2436-24, T22_"FIBER OPTICS"	PC243624-T22_457	Gray	24"	380.0	2	22500	
T22	24361617	Unit, PC2436-24, T22 - "Street Lighting"	PC243624-T22	Gray	24"	380.0	2	22500	
T22	24361618	Unit, PC2436-24, T22 - "Traffic Signal"	PC243624-T22	Gray	24"	380.0	2	22500	
T22	24361461	Unit, PC2436-24 T22 HBlT WAX_"MARKING PLATE REQ"	PC243624-T22_999	Gray	24"	380.0	2	22500	
T22	24361466	Unit, PC2436-30 T22 HBlT WAX_"MRKNG PLT REQ"	PC243630-T22_999	Gray	30"	425.0	2	22500	
T22	24361626	Unit, PC2436-30, T22 - "Electric"	PC243630-T22	Gray	30"	425.0	2	22500	

## OLDCASTLE POLYMER 3048

Polymer Concrete - 30" x 48" (formerly H-Series)



MEDIUM DUTY  
ANSI/SCTE TIER 15



HEAVY DUTY  
ANSI/SCTE TIER 22



RATING	PART #	DESC 1	DESC 2	COLOR	DEPTH	ITEM WEIGHT	PALLET QTY	DESIGN LOAD (LB)	QUICK SHIP
<b>Body - 3048</b>									
T22	30482008	Body, PC3048-18,SW	PC304818SW	Gray	18"	188.0	2	22500	
T22	30482021	Body, PC3048-24,SW	PC304824SW	Gray	24"	234.0	2	22500	
T22	30482020	Body, PC3048-30,SW	PC304830SW	Gray	30"	301.0	1	22500	
T22	30482017	Body, PC3048-36,SW	PC304836SW	Gray	36"	307.0	1	22500	
<b>Lid - 3048</b>									
T15	30484602	Lid, PC3048-T, T15 - Blank,2pc	PC3048T-T15	Gray	-	220.0	5	15000	
T15	30484606	Lid, PC3048-T, T15 -"Electric",2pc	PC3048T-T15	Gray	-	220.0	5	15000	
T15	30484607	Lid, PC3048-T, T15_"FIBER OPTICS",2pc	PC3048T-T15_457	Gray	-	220.0	5	15000	
T15	30484608	Lid, PC3048-T, T15 -"Ground",2pc	PC3048T-T15	Gray	-	220.0	5	15000	
T15	30484609	Lid, PC3048-T, T15 -"Street Lighting",2pc	PC3048T-T15	Gray	-	220.0	5	15000	
T15	30484611	Lid, PC3048-T, T15 -"Traffic Signal",2pc	PC3048T-T15	Gray	-	220.0	5	15000	
T15	30484694	Lid, PC3048-T, T15 -SPECIAL,2pc w/	PC3048T-T15 999	Gray	-	220.0	5	15000	
T22	30484001	Lid, PC3048-T, T22 - "Electric",2pc	PC3048T-T22	Gray	-	338.0	5	22500	
T22	30484003	Lid, PC3048-T, T22 - Blank,2pc	PC3048T-T22	Gray	-	338.0	5	22500	
T22	30484011	Lid, PC3048-T,T22 - "Electric"	PC3048T-T22 1pc	Gray	-	338.0	5	22500	
T22	30484012	Lid, PC3048-T, T22 - "Fiber Optics",2pc	PC3048T-T22	Gray	-	338.0	5	22500	
T22	30484015	Lid, PC3048-T, T22 - "Traffic Signal",2pc	PC3048T-T22	Gray	-	338.0	5	22500	
T22	30484613	Lid, PC3048-T, T22 - "Street Lighting",2pc	PC3048T-T22	Gray	-	338.0	5	22500	
T22	30484614	Lid, PC3048-T, T22 - 4x8 MRKNG PLT REQ,2pc	PC3048T-T22	Gray	-	338.0	5	22500	
<b>Unit - 3048 (Units come standard with Body-Open Bottom, Lid, and SS Hex Bolt Floating Nut Hardware)</b>									
T15	30481600	Unit, PC3048-18, T15 - Blank	PC304818-T15	Gray	18"	408.0	2	15000	
T15	30481603	Unit, PC3048-18, T15 -"Electric"	PC304818-T15	Gray	18"	408.0	2	15000	
T15	30481604	Unit, PC3048-18, T15_"FIBER OPTICS"	PC304818-T15_457	Gray	18"	408.0	2	15000	

CONTINUED ON NEXT PAGE

Products are rated by the lowest component rating.  
Tier 15 cover with a tier 22 body is rated tier 15.  
Tier 22 cover with a tier 22 body is rated tier 22.