



ELECTROFUSION COUPLING
PE3408/PE4710
CTS/IPS

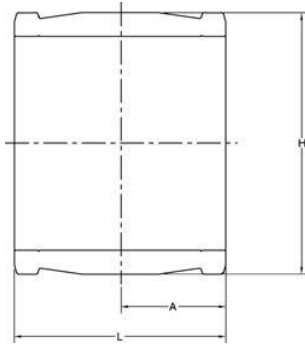
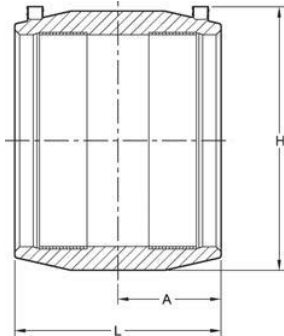
- Pin Type: 4.7R (4.7 Pin with Resistor)
- Approval: ASTM D2513
- Approval: ASTM F1055
- Approval: AWWA C906
- Approval: NSF-61
- *Approval: FM 1613; FM CL150; NSF-61
- **Approval: FM 1613; FM CL200; NSF-61

Note: Operating pressure is 200 psi for PE4710 couplings in allowable applications.

* Industrial Non-Compliant ASTM Fittings

** For use with Bar-Code Processor Only

Please call for more information on availability, pricing, other sizes and dimensions.



<...>	Size (inch)	GFCP Part No.	GF Part No.	weight (lb)	H (inch)	L (inch)	A (inch)	Box Qty
	1/2 CTS	5760019	360 000 883	0.088	2.01	3.15	1.57	50
	3/4 CTS	10004578	360 000 887	0.132	2.15	2.98	1.42	40
	1 CTS	5760023	360 000 891	0.198	2.52	3.46	1.73	25
	1-1/4 CTS	10004573	360 000 895	0.154	2.56	3.30	1.57	30
*	2 CTS	10004580	360 000 919	0.463	3.59	4.37	2.18	40
	1/2 IPS	10004627	360 000 885	0.132	2.15	2.98	1.42	40
	3/4 IPS	5760022	360 000 889	0.220	2.48	3.46	1.73	25
	1 IPS	5760024	360 000 893	0.132	2.63	3.46	1.73	25
	1-1/2 IPS	5760028	360 000 899	0.331	3.36	4.33	2.17	35
	1-1/4 IPS	5760026	360 000 897	0.287	2.56	3.30	1.57	50
	2 IPS	5760030	360 000 920	0.375	3.78	4.72	2.36	25
	3 IPS	10000358	360 000 933	1.168	5.18	5.59	2.72	36
**	4 IPS	10000360	360 000 936	1.676	6.51	6.14	3.00	10
	6 IPS	10011339	360 021 241	4.145	8.74	8.19	4.09	8
**	6 IPS	10000359	360 000 939	4.497	8.70	8.35	4.10	8
	7 IPS	10003970	360 000 942	4.960	8.93	8.19	4.09	8
**	8 IPS	10000361	360 000 944	8.444	11.20	9.48	4.70	4
*	10 IPS	10004579	360 000 902	15.741	13.41	10.50	5.00	1
**	10 IPS	10000362	360 000 903	15.234	13.10	10.50	5.00	1
*	12 IPS	10004571	360 000 905	23.104	15.84	11.50	5.50	1
**	12 IPS	10000363	360 000 906	23.898	15.84	11.50	5.50	1